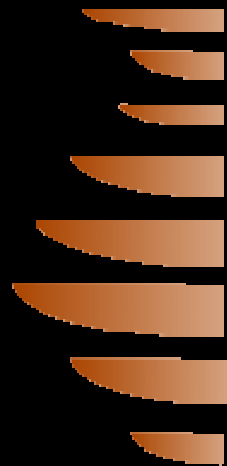


Pithos: Experience and Lessons



πίθος

<http://pithos.grnet.gr>

Panos Louridas,
GRNET
louridas@grnet.gr

Pithos: Web Interface

The screenshot displays the Pithos web interface. At the top, there is a menu bar with icons for Quit, File, Edit, Group, Settings, and Help. On the right side of the top bar, the Pithos logo (with 'beta' text) and the grnet logo are visible. Below the menu bar, a search bar on the left contains the text 'Search for files...' and a 'Search' button. On the right of this bar, the user's name and email address, 'Panagiotis Louridas, louridas@grnet-hq.admin.grnet.gr', are displayed.

The main content area is divided into two sections. On the left is a sidebar with a tree view of the user's storage structure, including folders like 'Amazon-IBM-cloud', 'Coraline', 'read', 'temp', 'video', 'Trash', 'My Shared', and 'Other's Shared'. The 'read' folder is currently selected.

On the right is a table showing search results. The table has tabs for 'Files', 'Groups', and 'Search Results', with 'Search Results' being the active tab. The table columns are 'Name', 'Owner', 'Path', 'Version', 'Size', and 'Date'. Three files are listed:

Name	Owner	Path	Version	Size	Date
mcs2009040012.pdf	louridas@grnet-hq.admin.grnet.gr	/read/	1	772.2 KB	29/7/2009 5:03 PM
mcs2009040029.pdf	louridas@grnet-hq.admin.grnet.gr	/read/	1	921.9 KB	29/7/2009 5:03 PM
mcs2009040042.pdf	louridas@grnet-hq.admin.grnet.gr	/read/	1	1.8 MB	29/7/2009 5:04 PM

At the bottom of the interface, a status bar shows 'Totals: 98 files, 18 GB used, 32 GB free' and 'Showing: 3 files (3.4 MB)'. Below this is a search filter bar with 'Find: beha' and buttons for 'Next', 'Previous', 'Highlight all', and 'Match case'.

Pithos: Firefox Extension

The screenshot displays the Pithos Firefox extension interface, which functions as a file manager. It is divided into two main panes: a local file manager on the left and a remote file manager on the right.

Local File Manager (Left Pane):

- Location: Local - Home /Users/Panos
- Table columns: Name, Size (Bytes), Date, Version
- Files listed include directories (Desktop, Documents, Downloads, dwhelper, Library, Movies, Music, Pictures, Public, Sites, tmp) and various text files (cern.txt, fp7.txt, science_2008.txt, etc.) with their respective sizes and dates.

Remote File Manager (Right Pane):

- Location: Remote - Home ...@grnet-hq.admin.grnet.gr/files/read/
- Table columns: Name, Size (Bytes), Date, Version
- Files listed include a parent directory (..) and three PDF files (mcs2009040012.pdf, mcs2009040029.pdf, mcs2009040042.pdf) with their sizes and dates.

Bottom Bar:

- Navigation icons: Home [F1], Copy [F5], Move [F6], Make Folder [F7], Delete [F8]
- Status: Totals: 98 files 18462 MB used 32738 MB free
- Logged in as: louridas@grnet-hq.admin.grnet.gr (louridas)

Pithos: Volume per User

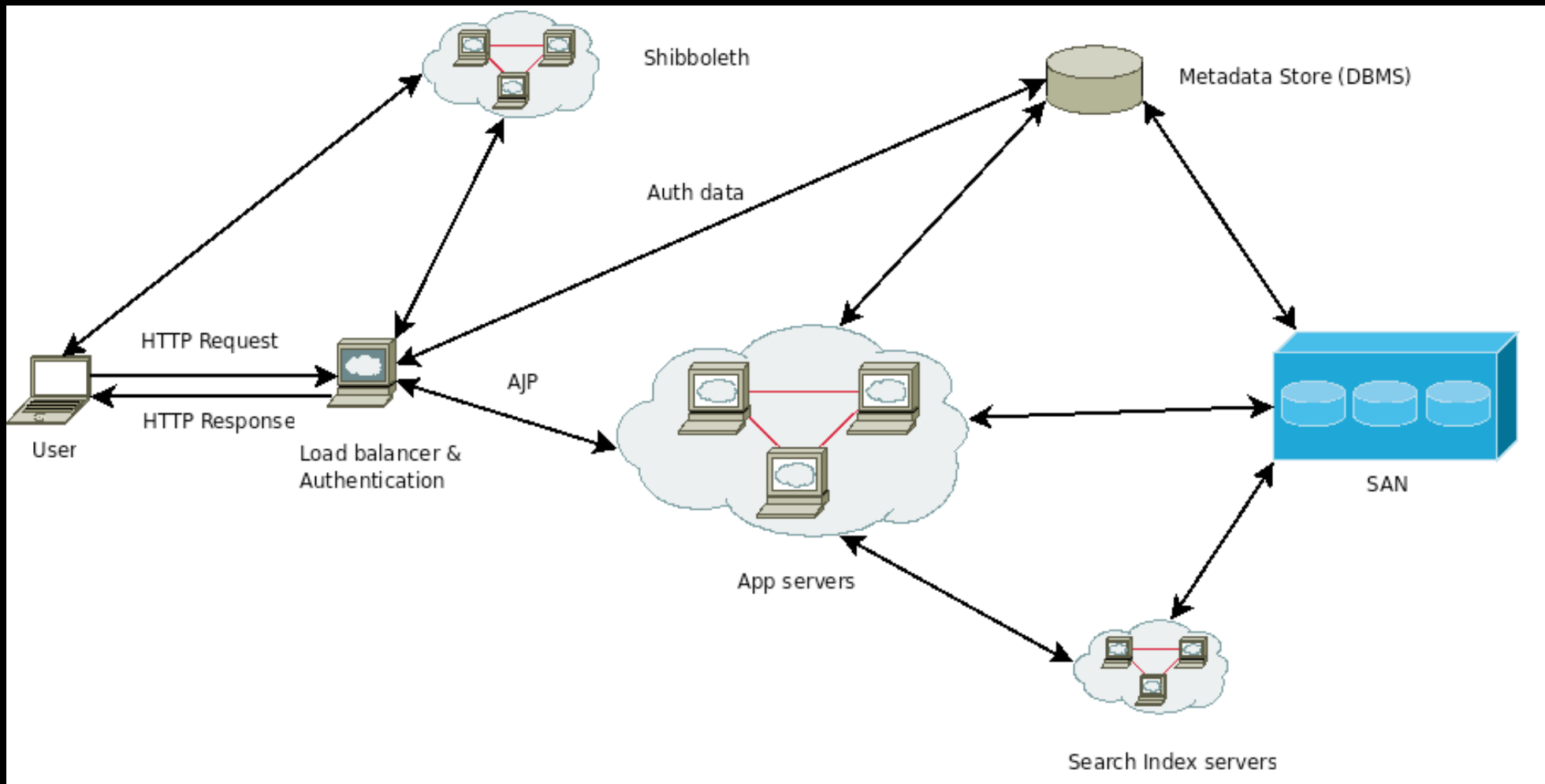
10 Gbytes

30 Gbytes

50 Gbytes

What would we change?

Pithos HW Implementation



8 App Servers, 8 RDMBS Servers, 2 Index Servers

Pithos: Resources

API: <http://code.google.com/p/gss/wiki/API>

Server code and web client code:

<http://code.google.com/p/gss/source/browse/>

Other client code: <http://code.grnet.gr/projects/pithos>

Pithos: Server Implementation (GSS)

App Server: Java / JBoss

RDBMS: Postgres

Index: Solr

What would we change?

Pithos: Client Implementation

Web client: GWT

Firefox extension: Javascript

CLI: Java

WebDAV: AppleScript

What would we change?

Pithos: Support



PithosRealms

22 universities and research centres



Pithos: Promotion

παλιά



τώρα



πίθος

<http://pithos.grnet.gr>

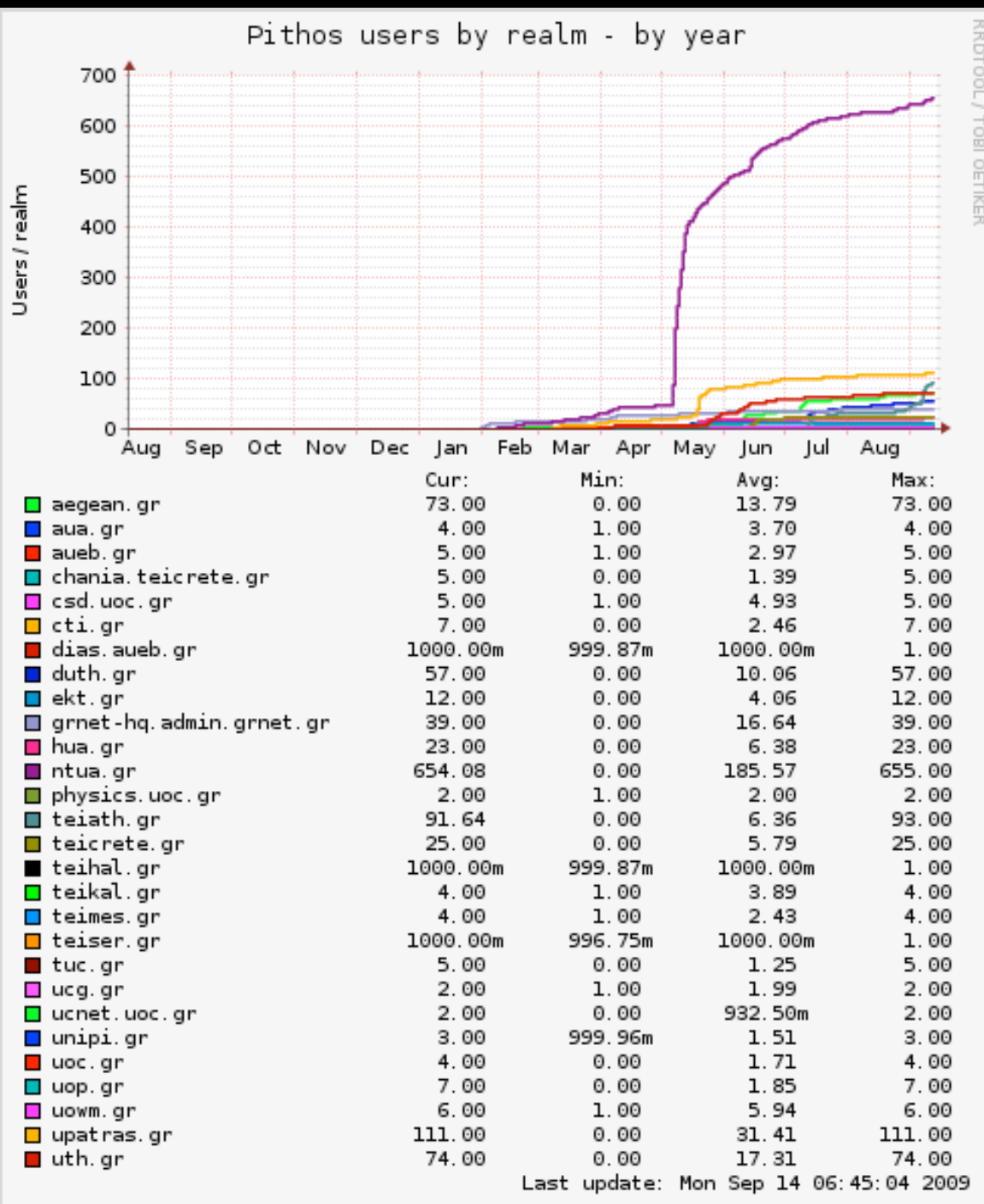
50 Gbytes δωρεάν για κάθε φοιτητή



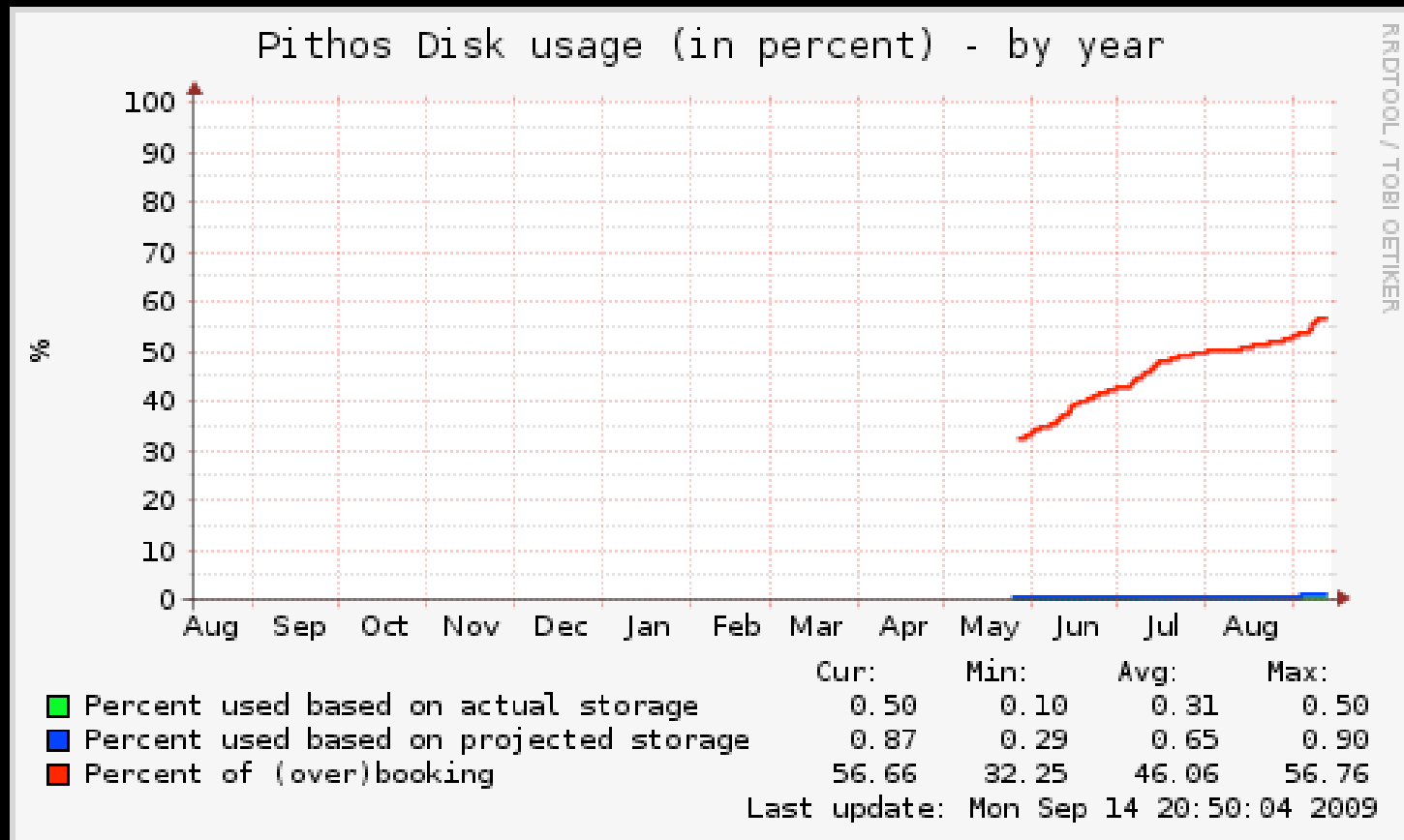
Networking Research and Education



Pithos Users by Realm

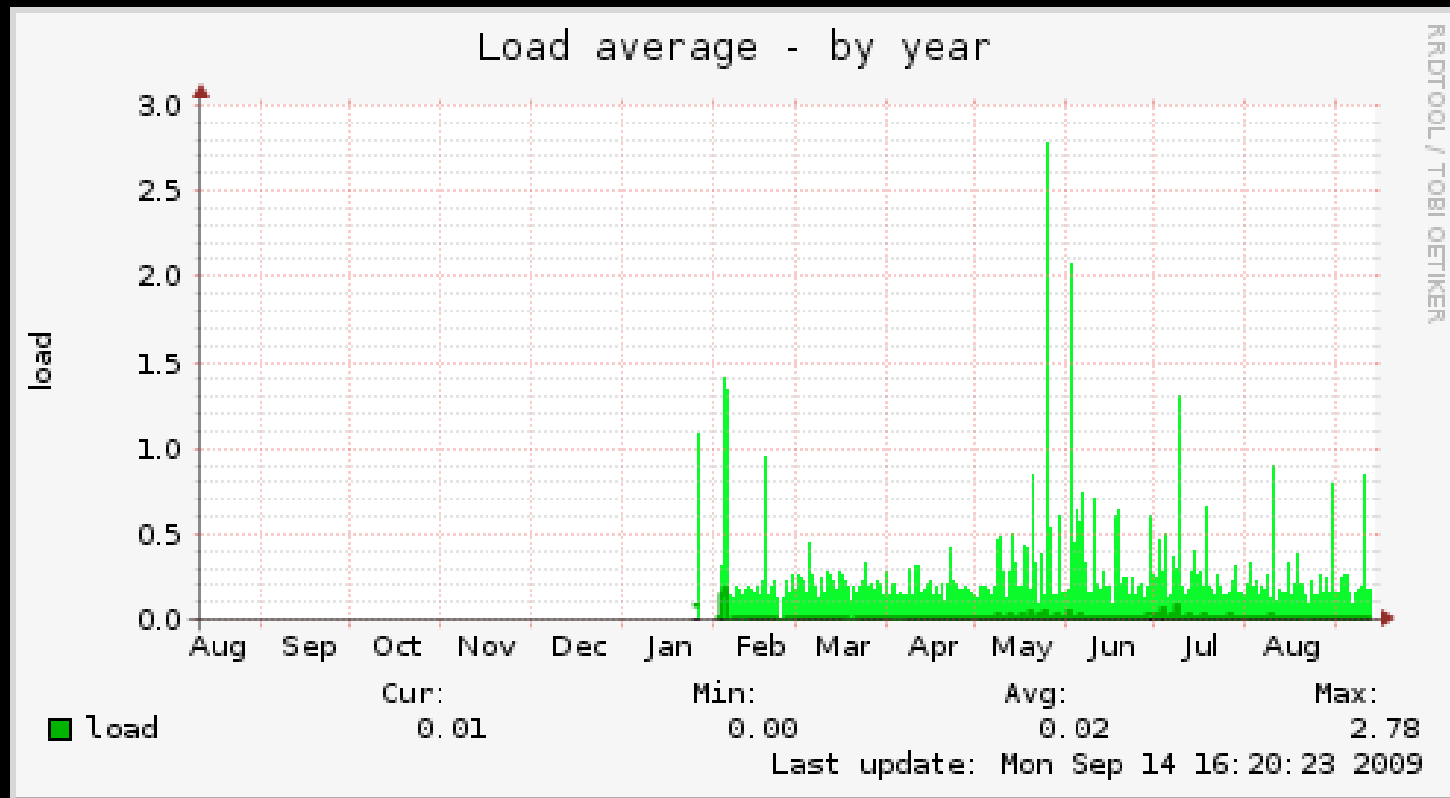


Pithos Disk Usage



- used capacity / real capacity
- used capacity / promised capacity
- promised capacity / real capacity

Pithos Load Average



Pithos Terms of Use



Pithos Uses



Pithos Abuses



The Verdict



The Future

