



JRA1 Status Update

Nicolas Simar, DANTE

JRA1 Athens TF-NGN Meeting,
November 2005



Connect. Communicate. Collaborate

- Main Services - Status

- Services design and implementation
 - MA prototyped
 - Deployed (Abilene, ESnet, GÉANT access, Uninett) and being used
 - Being refined...
 - LS prototype
 - Mostly Implemented.
 - Missing: services auto-registration, updates.
 - Next steps: multi-LS
 - MP Service
 - Work starting
 - Development week in Poznan (next one in Dublin – January)



Connect. Communicate. Collaborate

• Tools - Status

- D3-I1 : OWD – IPPM (work going on – OWAMP)
 - Integration in the MA (for December) – MP (Q1 2006)
 - Configuration (10), shipment and installation (2).
 - Visualisation interface enhancements.
 - Measurement probes enhancements (IPv6, IP QoS).
 - Next step: OWAMP.
- D3-I1 : AB (iperf)
 - Installation status, same as IPPM.
 - MP integration for December.
- D3-I1 : netflow
 - Tools investigation
 - http://monstera.man.poznan.pl/jra1-wiki/index.php/JRA1_D3.4_Flow_Monitoring



Connect. Communicate. Collaborate

- Tools - Status

- D3-I1 : Passive

- Two 10Gbps and two 2 1Gbps DAG cards
- Four applications
 - Short term available bandwidth.
 - Packet loss for a user traffic.
 - Tracefile capture (like tcpdump).
 - TCP monitoring
 - debugging performance problem with TCP protocol.
 - <http://monstera.man.poznan.pl/jra1-wiki/index.php/Passive>



Connect. Communicate. Collaborate

- Status
 - D3-I1 : network equipment – May 2006
 - Collaboration with JRA3 is starting.
 - Need to integrate L2 circuit monitoring.
 - D5-I3 : visualisation – CNM
 - First version need to be ready by the 31st of December.
 - D5-I3 : visualisation – path based tool – December 31st
 - First draft of work description being written.

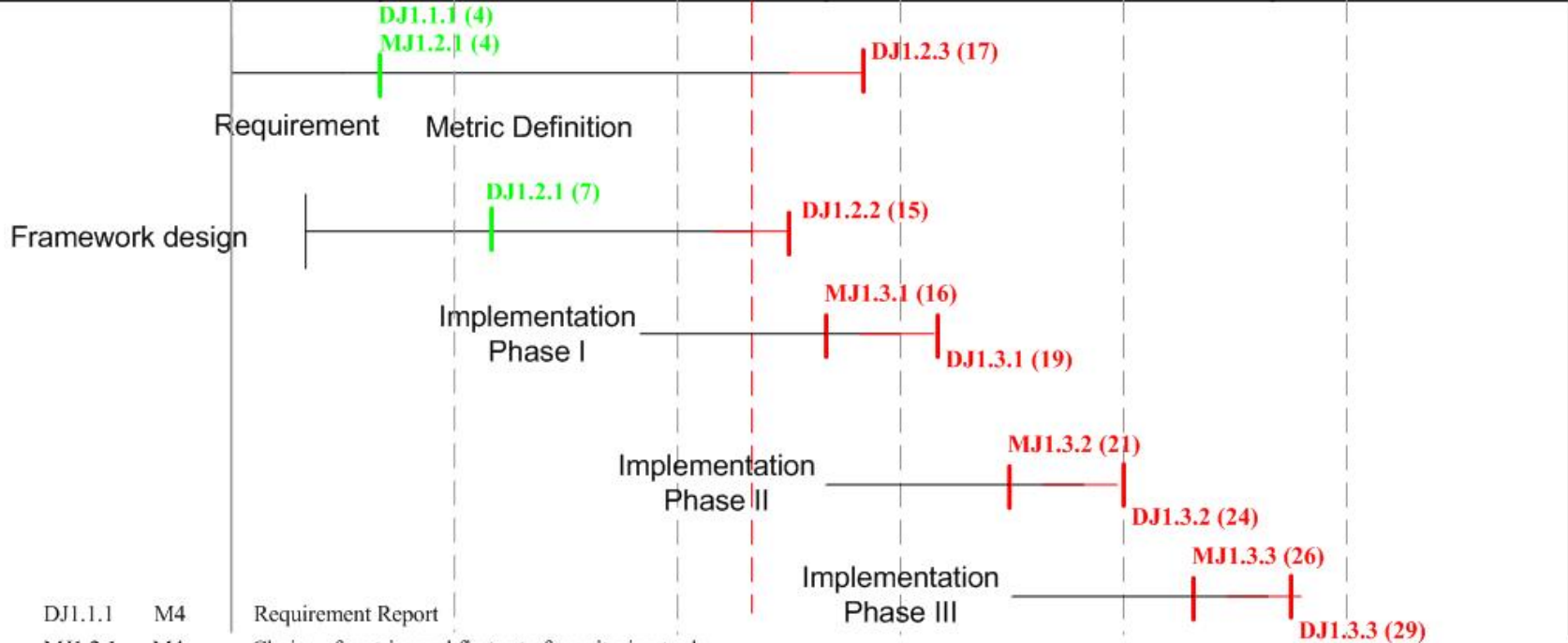


2004

2005

2006

2007



DJ1.1.1	M4	Requirement Report
MJ1.2.1	M4	Choice of metrics and first set of monitoring tools
DJ1.2.1	M7	Framework Design - Single Domain
DJ1.2.2	M15	System Architecture Modules Design
MJ1.3.1	M16	Implementation Milestone Phase I
DJ1.2.3	M17	Network metric report
DJ1.3.1	M19	Phase I - Implementation Report
MJ1.3.2	M21	Implementation Milestone Phase II
DJ1.3.2	M24	Phase II - Implementation Report
MJ1.3.3	M26	Implementation Milestone Phase III
DJ1.3.3	M29	Phase III - Implementation Report



Connect. Communicate. Collaborate

- Phases I
- Implementation by the end of December 2005
- Path Based Visualisation (Carnet)
- IPPM Integration (DFN Erlangen)
- BWCTL Integration (DFN Erlangen)
- CNM Integration (DFN Muenchen)
- Base Services (DANTE, PSNC, GRnet, REDIRIS)



Connect. Communicate. Collaborate

- Demo
- CNM
 - http://cnmdev.lrz-muenchen.de/cnm-app/def/jnlp/topoapplet_devel.jnlp
- EGEE
 - <https://egee.epcc.ed.ac.uk:28443/npm-dt/>
 - Need a certificate
- ESnet path based tool
 - <https://performance.es.net/cgi-bin/perfsonar-trace.cgi>