



GN2 JRA1 activity update

Nicolas Simar, Dante
TF-NGN, Paris, July 2005



Connect. Communicate. Collaborate

- Status

- First pieces of equipments bought (IPPM-AB).
- Service Oriented Architecture
 - Web-services, Axis Tomcat
 - Interfaces – follow the GGF NM-WG
- OWD – IPPM (work going on – OWAMP) + RIPE TTM
- Netflow (... progress in the choice of tools)
- Passive (selection of monitoring application)
- Visualisation – CNM

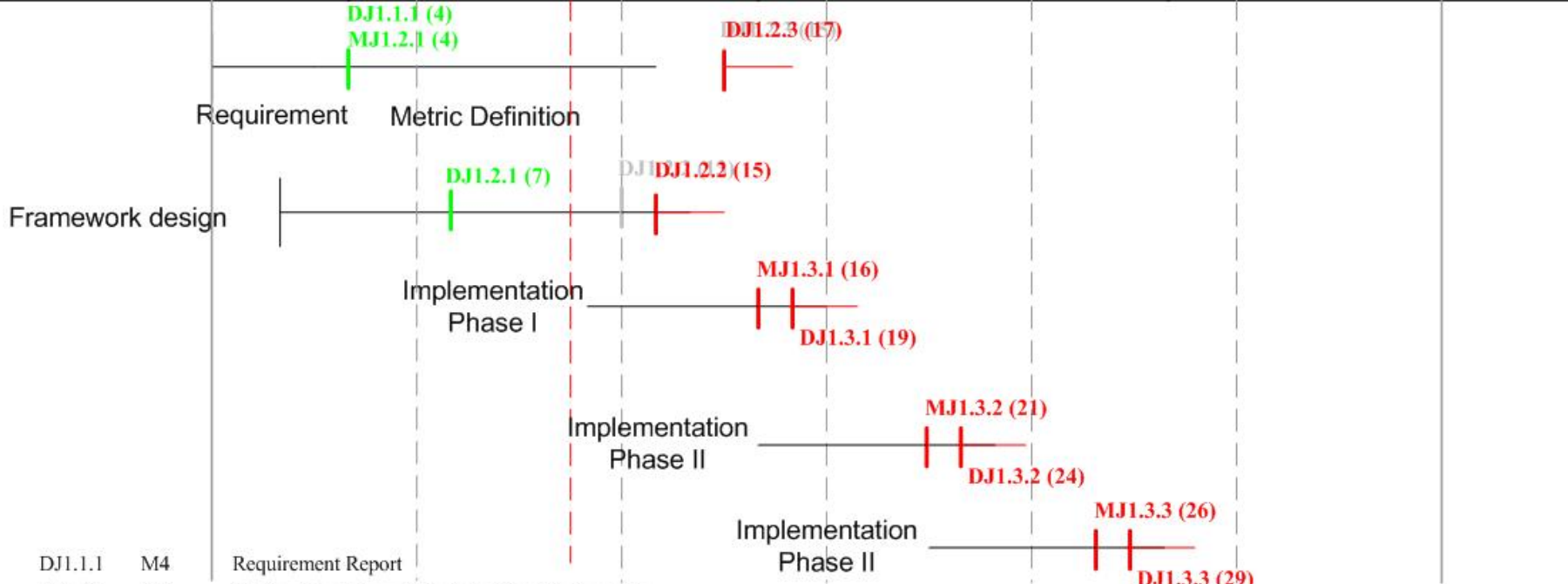
2004

2005

2006

2007

GN2 1 7 13 19 25 31



| | | |
|---------|-----|---|
| DJ1.1.1 | M4 | Requirement Report |
| MJ1.2.1 | M4 | Choice of metrics and first set of monitoring tools |
| DJ1.2.1 | M7 | Framework Design - Single Domain |
| DJ1.2.2 | M15 | System Architecture Modules Design |
| MJ1.3.1 | M16 | Implementation Milestone Phase I |
| DJ1.2.3 | M17 | Network metric report |
| DJ1.3.1 | M19 | Phase I - Implementation Report |
| MJ1.3.2 | M21 | Implementation Milestone Phase II |
| DJ1.3.2 | M24 | Phase II - Implementation Report |
| MJ1.3.3 | M26 | Implementation Milestone Phase III |
| DJ1.3.3 | M29 | Phase III - Implementation Report |



Connect. Communicate. Collaborate

- Phases I
- Implementation by the end of December 2005
- Path Based Visualisation
- IPPM Integration
- BWCTL Integration
- CNM Integration
- Base Services



Connect. Communicate. Collaborate

- Phases II
- Implementation by the end of May 2006
- Passive Integration
- Network Equipment and Looking Glass
- IPPM Multicast
- Mobile Box
- Topology Service
- Visualisation - tbd
- NEMO Integration

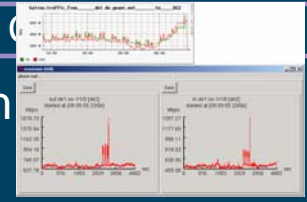


Connect. Communicate. Collaborate

- Phases III
- Implementation by the end of October 2006
- Netflow Integration
- Visualisation – tbd
- End-user tools –tbd
- Visualisation – tbd
- AA



Connect. Collaborate



Useful graph

Client

RA A

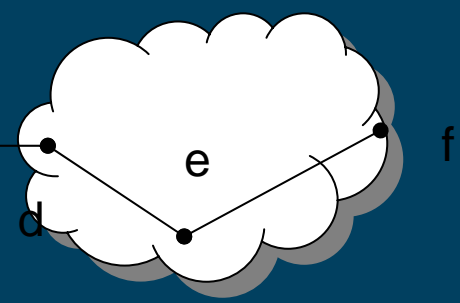
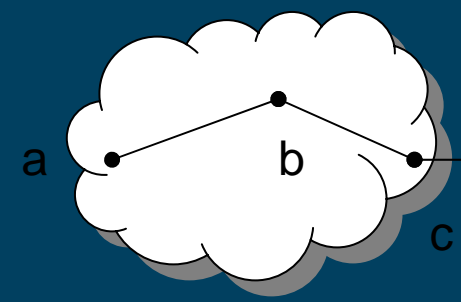
RA B

LS A

MA A

LS B

MA B



Network A

Network B

Token MA
 Here is who I am, I'd like to access MA A
 Here is who I am, I'd like to access MA B
 Where Link utilisation along - Path a,b,c?
 Where Link utilisation along - Path a,b,c,d,e,f?
 Get Link utilisation a,b,c
 Get link utilisation c,d,e,f
 Here you go
 Token MB



Connect. Communicate. Collaborate

- Information
- Lightpath monitoring in collaboration with JRA3.
- GN2-JRA1 website <http://www.geant2.net/>
 - >Research > Performance Measurement
- Mailing list archives
 - Prototype - <http://mail.geant2.net/gn2-jra1-prototype/>
 - RFE - <http://mail.geant2.net/gn2-jra1-rfe/>
- DFN IPPM - <http://www-win.rrze.uni-erlangen.de/ippm/>
- DFN CNM – <http://www.cnm.dfn.de/>
- Uinett NEMO - <http://software.uninett.no/>