

---

# Update on Measurement-related Activities

---

TF-NGN Meeting Amsterdam

May 2004

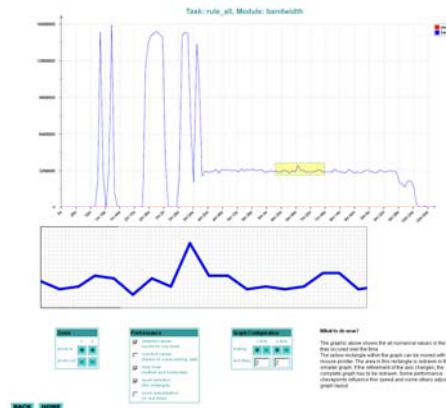
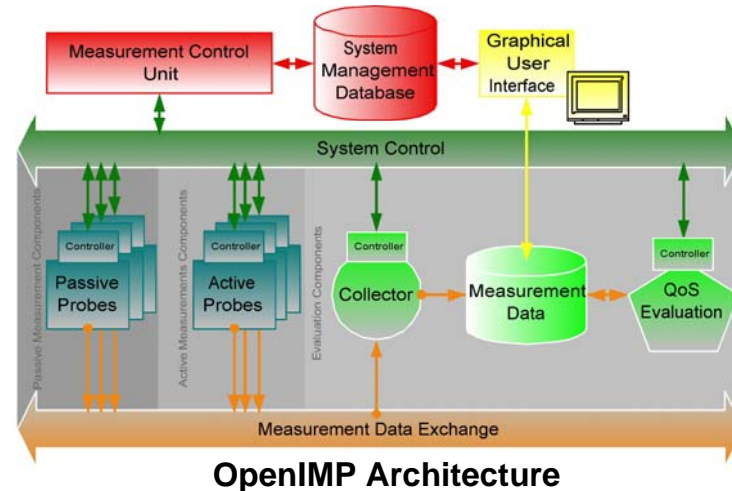
Rudolf Roth

Fraunhofer FOKUS

[roth@fokus.fraunhofer.de](mailto:roth@fokus.fraunhofer.de)

# MeTeoR Measurement Tools

- IP Measurement Platform (OpenIMP)
  - IST 6QM Demo for *Fairness in On-line Gaming* at Eurov6/6NET event Brussels, May 18-19
- Network Measurement and Accounting Meter (NetMate)
  - Flexible, extensible Meter
  - GUI for control
- [www.ip-measurement.org](http://www.ip-measurement.org)
  - Tool and Trace DB
  - Tech. Reports, White Papers



NetMate Output

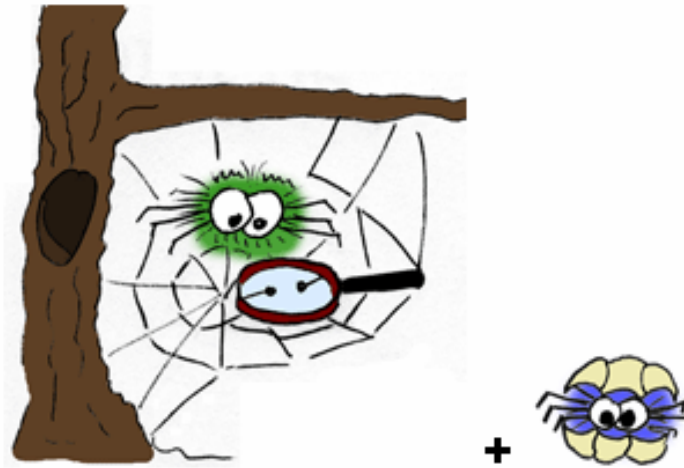


<http://www.fokus.fraunhofer.de/meteor/projects/ip-gos/netmate/>



**NetMate**

- ◆ [Introduction](#)
- ◆ [Features](#)
- ◆ [Download](#)
- ◆ [Copyright/License](#)
- ◆ [Release Notes](#)
- ◆ [Getting Started](#)
- ◆ [Documentation](#)
- ◆ [Contact](#)



**NetMate + NmRsh**

## Introduction

**NETMATE** (Network Measurement and Accounting) is a flexible and extensible network measurement meter. It can be used for accounting, delay/loss measurement, packet capturing etc. The main advantage over other existing tools is that it can be easily extended due to its modular (class-based) structure and dynamic loadable packet processing and information export modules.

**NMRSH** is the Netmate Remote Shell which allows to remote control netmate meters.

---

## Update on IETF Activities related to Measurement

- 59<sup>th</sup> IETF Seoul (South Korea) in Feb 29 – Mar4 2004
- next meeting:  
60th IETF - San Diego, CA, USA, 1-6 August 2004
- not too much activities, since then

### IPPM

- new RFC 3763  
One-way Active Measurement Protocol (OWAMP) Requirements  
S. Shalunov, B. Teitelbaum



## IETF IPFIX

---

- Requirements `draft-ietf-ipfix-reqs-15.txt`  
nearly finished, only few IESG comments
- Evaluation of Candidate Protocols `draft-leinen-ipfix-eval-contrib-02`  
finished, RFC to be published with other referenced docs.
- Protocol `draft-ietf-ipfix-protocol-03.txt`  
central working item
- Info Model `draft-ietf-ipfix-info-03.txt`
- Architecture `draft-ietf-ipfix-arch-02.txt`  
in progress
- Applicability `draft-ietf-ipfix-as-01.txt`  
pending, awaiting protocol results
- new proposed draft:  
Guidelines for IPFIX Implementations on Middleboxes  
`draft-quittek-ipfix-middlebox-00.txt`
- Cisco Systems NetFlow Services Export Version 9  
`draft-claise-netflow-9-08.txt`  
individual contribution to be progressed as informational RFC

---

## IETF PSAMP

- Framework draft-psamp-framework-05.txt  
close to WG last call
- Sampl. and Filtering draft-ietf-psamp-sample-tech-04.txt  
awaiting clarification of IPR issues for hash functions  
close to WG last call
- Protocol draft-ietf-psamp-protocol-00.txt
- MIB draft-ietf-psamp-mib-02.txt
- Info Model draft-ietf-psamp-info-01.txt



---

# Coordination Action Monitoring and Measurement Cluster MOME

- key objectives
    - evaluate and promote interoperability of tools, comparability of results
    - select Data Format, Protocols for Configuration and Export
    - collect and disseminate measurement data
    - co-ordinate standardisation activities
    - organise workshops and conferences
  - 8 Partners: Salzburg Research, AT; NEC Europe, UK; Telefónica I&D, ES; Uni. Libre de Bruxelles, BE; Budapest Uni. of Tech. and Econ., HU; Warsaw University of Technology, PL; Fraunhofer FOKUS, DE; TERENA, NL
  - web: <http://www.ist-mome.org/>
  - ***MOME FP6 cluster is looking for information about \*measurement tools\* and \*measurement trace data\* to be collected and made publicly available via the web site. please send information e.g. name and URL of tool(s) or URL to trace(s)***
- 



---

## Network of Excellence: E-NEXT

- FP6 NoE for Emerging Networking Experiments and Technologies
- TF4.1 Measurements and Platforms
- Partners: LIP6 Paris, UoLouvain, UoTrento, UoTorino, FTW Wien, Eurecom, INRIA, LAAS, KTH , UoNapoli, Helsinki UoT, Tampere UoT, UPC Barcelona, SICS, UoLancaster, FOKUS
- goals:
  - cross platform access between partners
  - participation in planetlab, infrastructure as an active measurement platform
- web: <http://www.ist-e-next.net/>