



SWITCH

The Swiss Education & Research Network

SWITCH-CERT

**9th TF-CSIRT Workshop
May 29, 2003, Warsaw
Rolf Gartmann**

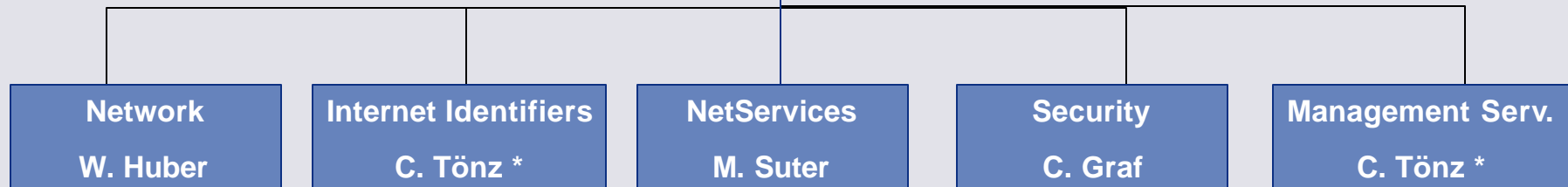
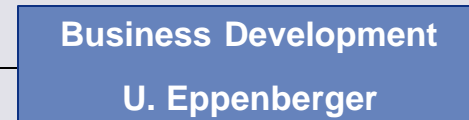
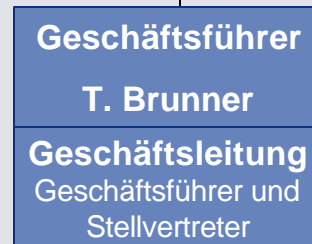
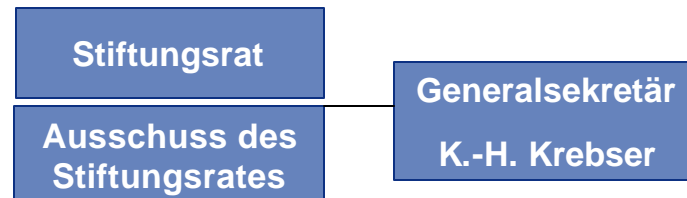


SWITCH - some facts

SWITCH

The Swiss Education & Research Network

- **founded 1987 by the Swiss Confederation and eight university cantons (Basle City, Berne, Fribourg, Geneva, Neuchâtel, St. Gall, Vaud and Zurich)**
- **with the objective "to create, promote and offer the necessary basis for the effective use of modern methods of telecomputing in teaching and research in Switzerland, to be involved in and to support such methods"**
- **Running the domain name registry for .ch and .li**
- **Head office located in Zurich**



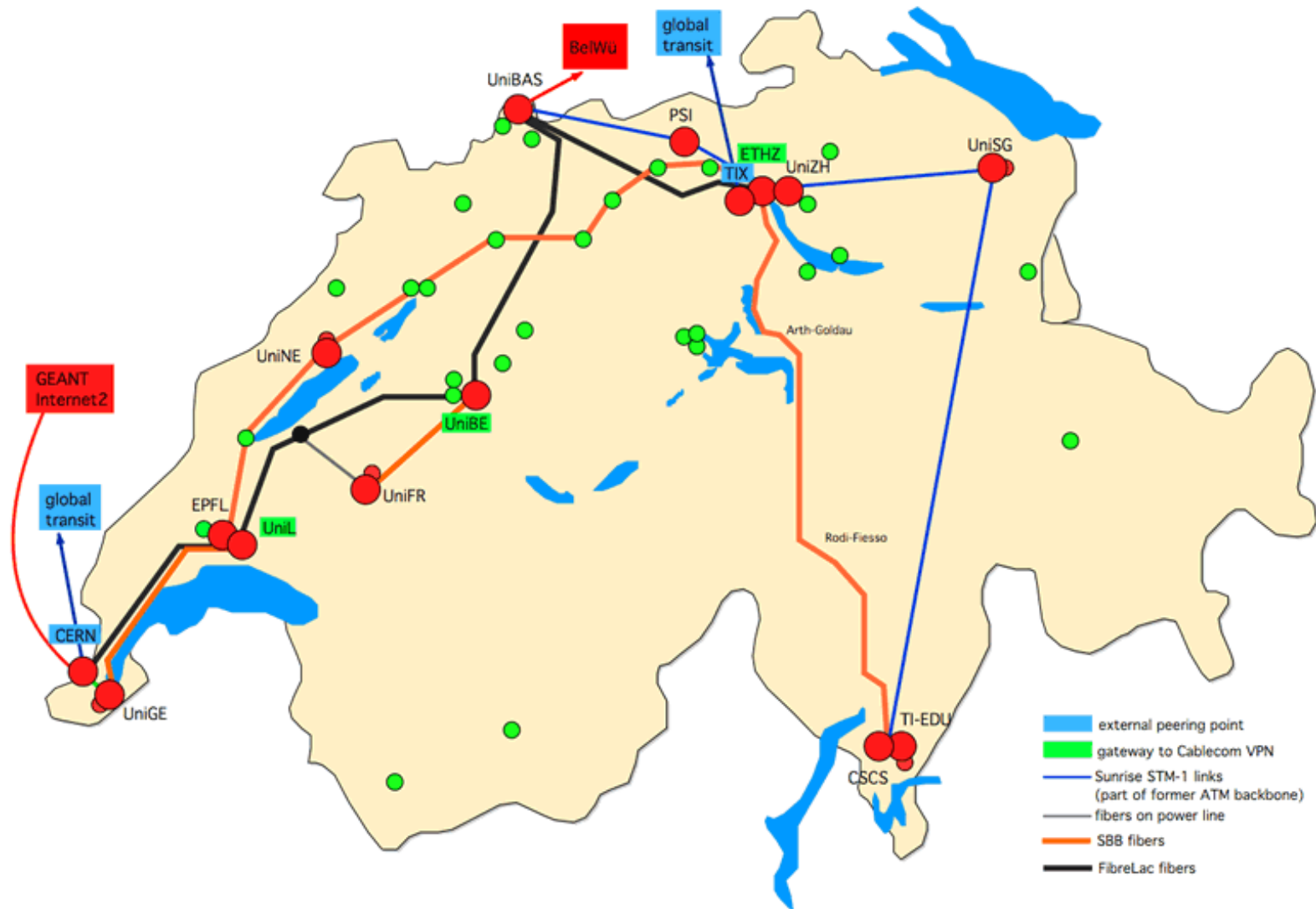
Erweiterte
Geschäftsleitung

*Stellvertreter des Geschäftsführers

SWITCH - Network Topology

SWITCH

The Swiss Education & Research Network



- **January 1995: start of SWITCH-CERT**
- **Until 2002 consisting of people from other Business Units**
- **Since 2002 SWITCH-CERT part of Security Business Unit**
- **3 members (not fulltime)**
- **Constituency: Network customers of SWITCH**

SWITCH-CERT Memberships

SWITCH

The Swiss Education & Research Network

- **FIRST full member since 1998**
(liaison member since 1996)
- **TI accredited (level 2) team member since Sept 2001**
- **SWIRT (swiss IRT) charter member 2003**



- Incident Handling (Coordination / Tracking)
- Incident Response (Support / Forensics)
- Security Advisory Mailinglist
- Organization of Security Workshops for our community to foster awareness, information sharing & cooperation
- Closed mailing list as discussion platform

SWITCH-CERT Work in Progress

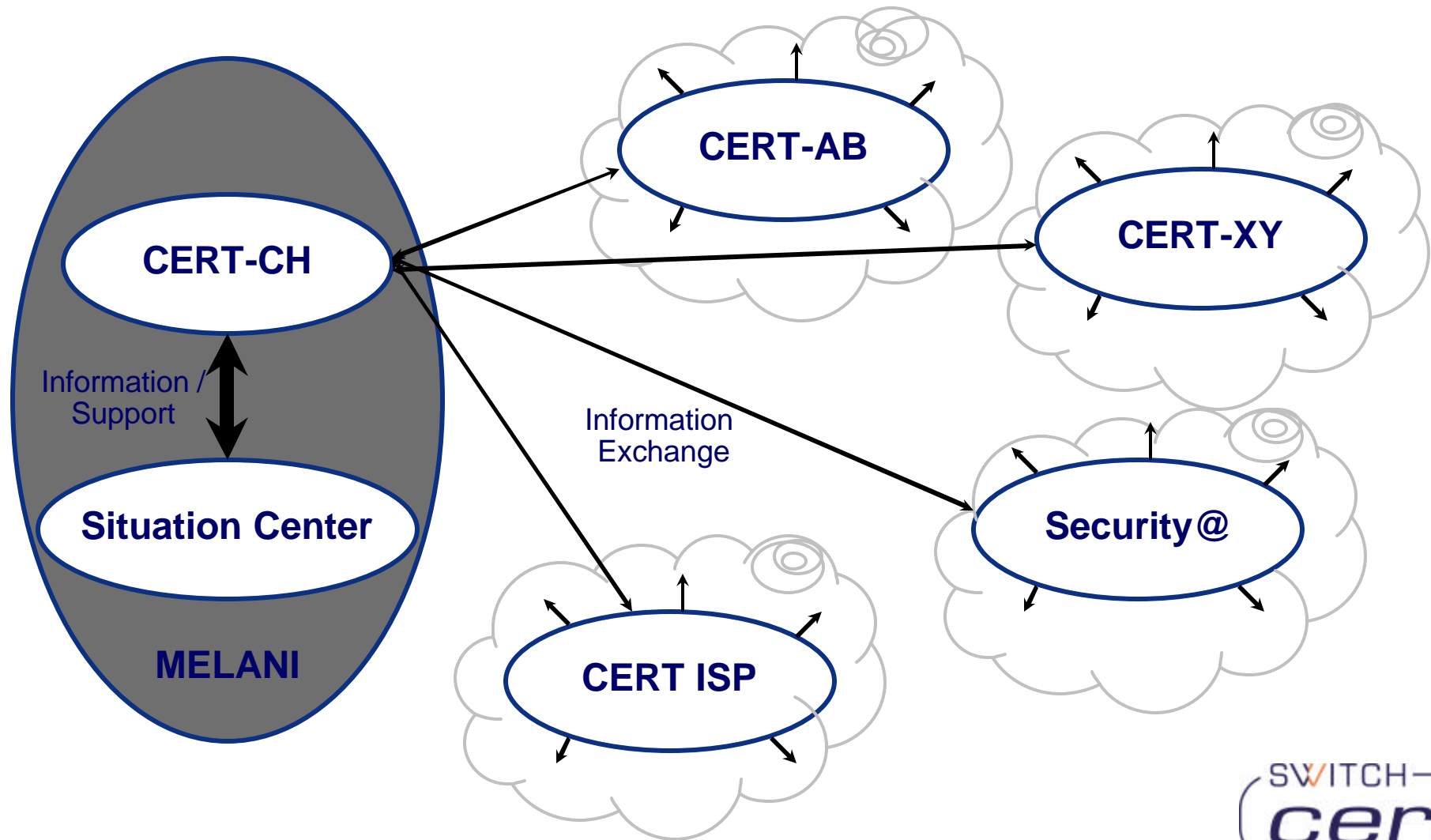
SWITCH

The Swiss Education & Research Network

- Improvement of Incident Handling Tool
- Improvement of Incident Response service
- MELANI (Melde- & Analysesstelle Informationssicherung)
~= Report & Analyses Center for Information Protection



- governmental project
- Part of a 4-Pillar strategy (Prevention, Recognition, Minimization of effect & Correction of cause)
- Report & Analyses Center for Information Protection
- further information:
<http://www.isb.admin.ch/internet/sicherheit/00791/index.html?lang=en&navlang=en>



Questions ?

if you need some help ...

It looks like you are running a port scan.

Would you like help launching a:

- Connect Scan
- Half-Open Scan (SYN)
- ACK Scan
- FIN Scan

▼ See more...

Options Search

