

mtCERT

MITTS Ltd.

**Computer Emergency Response Team
Malta**



IT in Maltese Government

- 1980's - one central Computer Centre
- Handled all Government Processing
- Batch processing
- 2 main frames handled the processing
- Network was localized in 1 site



Services Offered

- Inland Revenue
- Social Services
- Police Applications
- Telephone Bills
- Local Banks



Modern Times

- Early 1990' government changed IT strategy
- From Centralized to Distributed
- Department to process own Data
- Share data between Departments
- MSU (later MITTS) was formed in 1990



Role of MSU (MITTS Ltd.)

- Government IT agency
- Promote the use of IT in Public Service
- BPR and Consultancy to Government
- Technical Consultancy and implementation
 - Infrastructure
 - Systems
- MAGNET was built

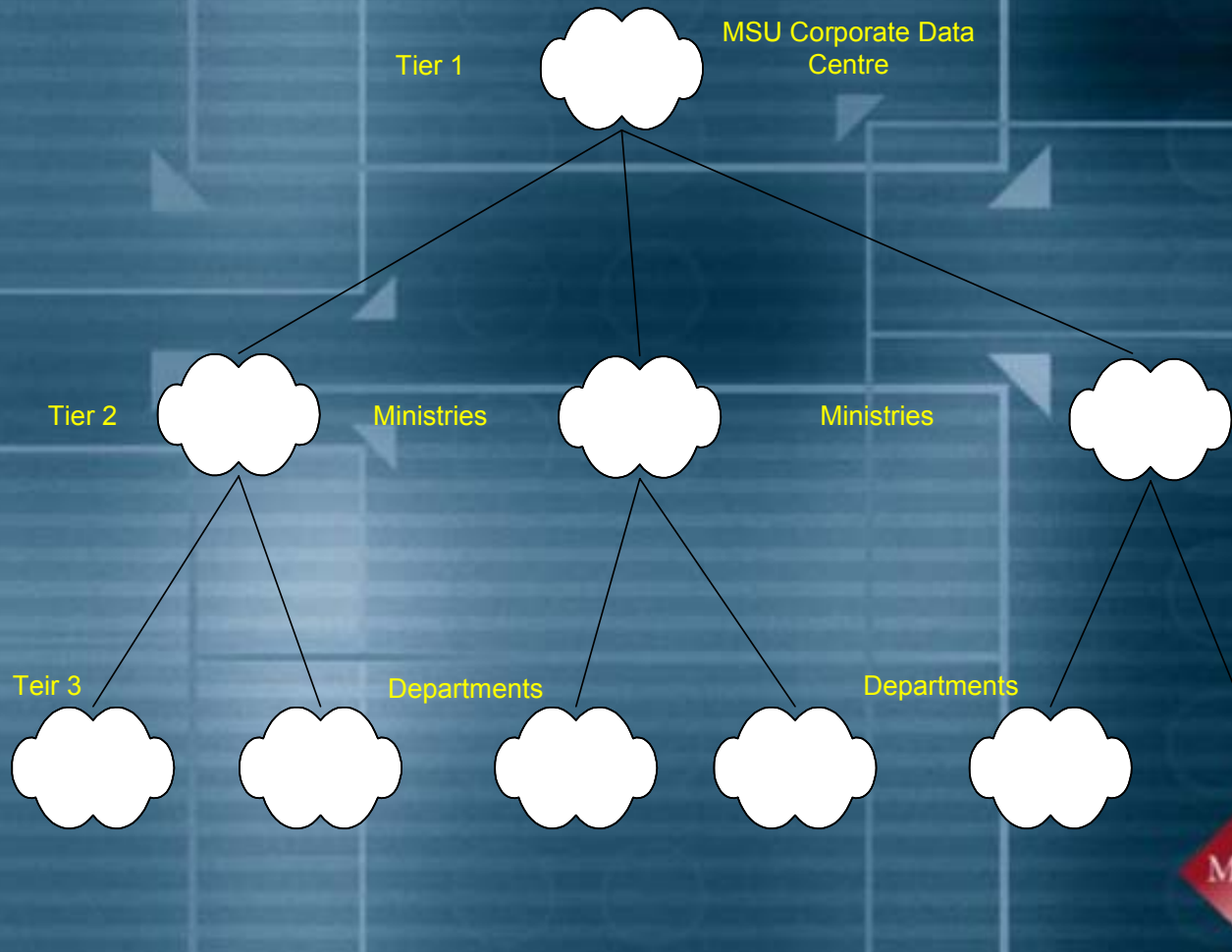


MAGNET- MALta Government NETwork

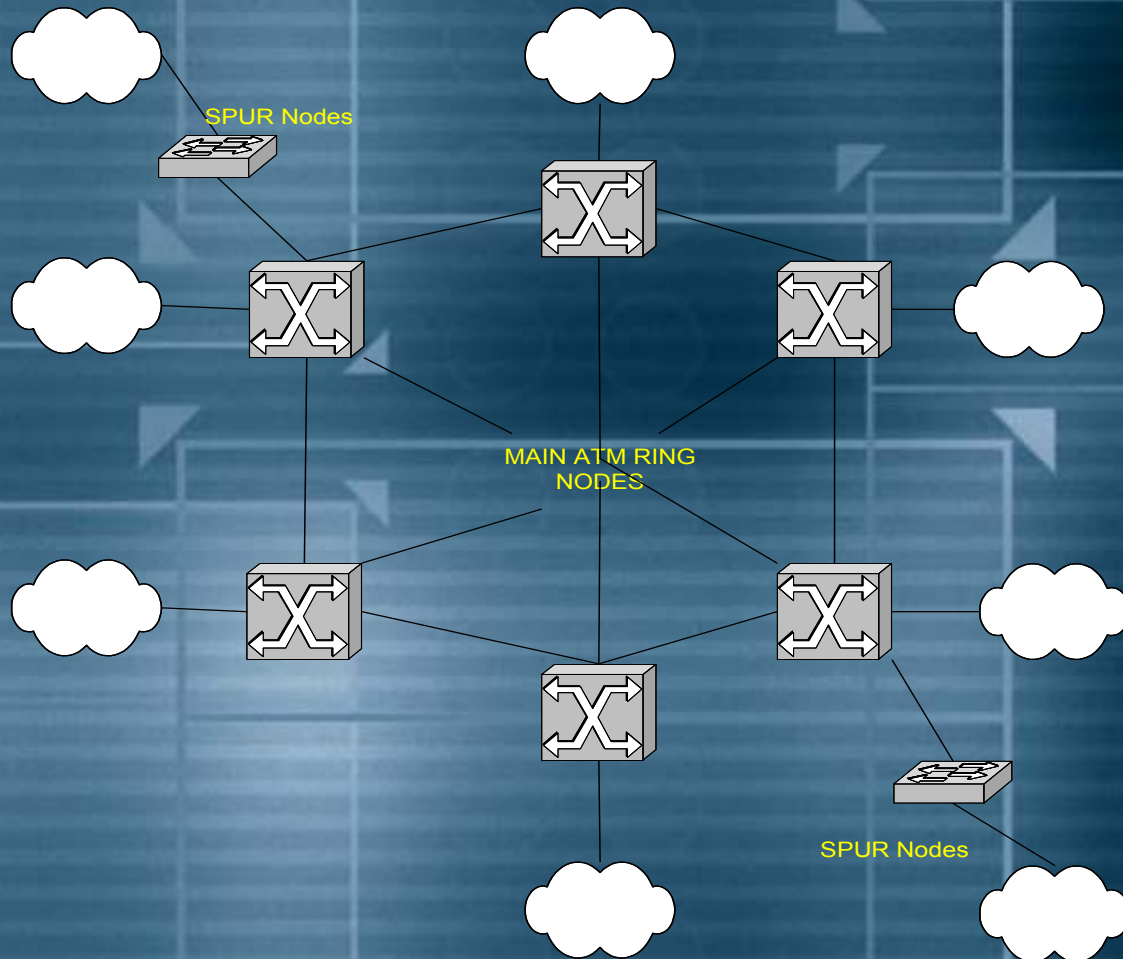
- Government wide network linking all Government Departments
- At first built on a 3 tier model using leased lines
- In mid 1990's MAGNET evolved
 - Ring Structure
 - ATM technology



3 Tier MAGNET Architecture



New MAGNET Setup



Internet Connection

- In 1995 MAGNET was connected to the Internet
- Using proxy setup
- Using application firewall
- Link to the net was 384K



Restructuring

- In 1997 MSU was restructured.
- Changed name to MITTS Ltd.
- MITTS Ltd. Challenges changed
- Business consultancy removed
- Concentrate on technical aspect of IT
 - Systems Development
 - Network Infrastructure
 - Operations



Restructuring

- In 2000 the Internet setup was upgraded
- Using better technology
- Better security
- Upgrade of international link to 6Mb/s
- Usage of MAGNET increased dramatically

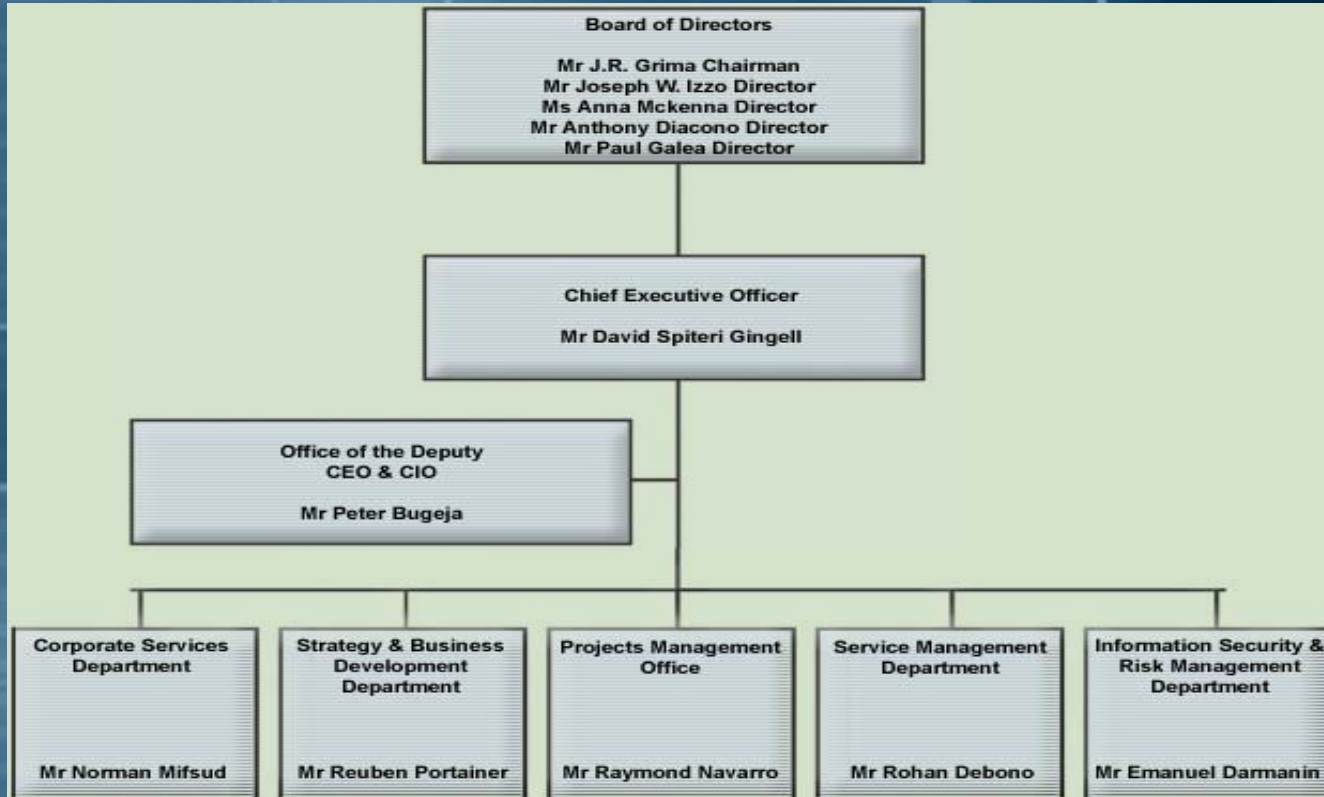


Threats

- Increase in MAGNET use
- Internal Threats increased
- External Threats increased
- At last management realized these threats
- Something had to be done to
 - Counter act for these attacks
 - Prevent such attacks
 - Resolve the problems if attacks occur
- mtCERT was formed



Organization Structure



mtCERT

- Team members identified
- Team formed
- Contacted some CSIRTs in Europe for help
- JANET-CERT responded
- JANET-CERT manager paid us a visit and showed us:
 - How to setup a CSIRT
 - How to operate a CSIRT
 - Introduction to other European CSIRT's



mtCERT

- Operational Framework document
- Document defines
 - Mission Statement
 - Charter
 - Constituency
 - Policies
 - Services offered
 - Contact Information



mtCert - Mission

- **Mission**

- *Provide a central point of contact once an incident occurs.*
- *Provide technical assistance and help to correct the damage caused by an incident.*
- *Educate our clients on known threats and risks when using the Internet and how to protect themselves from these threats.*
- *Advise and alert our clients, in the least possible time, on new risks and threats as well as the measures to be taken to prevent these new threats.*
- *Team up with International CERT Teams to keep the CERT updated with the latest threats and methods for their prevention.*



mtCERT -Charter

- mtCERT is under the patronage of MITTS Ltd.
- Under the authority of the ISRMD
- Backed up by Central Information Management Unit - Government's IT Regulating Authority
- mtCERT activities will be limited to the company for the time being.



mtCERT Constituency

- For the time being split in 2
- Full service constituency
 - Benefit from all mtCERT services
 - Defined as all MITTS employees
- Informative constituency
 - Benefit from mtCERT Information services
 - Defined as all Government employees
- In the near future both will be as one



mtCERT Policies

- Reactive Policies
 - Type of incidents handled
 - Attacks on confidentiality, integrity etc.
 - Level of support
 - Severity of incident (high low medium)
 - Support response (immediate, normal)
 - Incident Resolution
 - Authority
 - Response times
 - Member behaviour



mtCERT Policies

- Proactive Policies
 - Behaviour of members
 - Information Classification
 - Confidential
 - Informative
 - Contact with other CSIRT's
 - Secure Communications



mtCERT Services

- Reactive services
 - Triage
 - Incident Resolution
 - Incident Co-ordination
- Proactive Services
 - Training
 - Contacts
 - Information propagation methods



Way Forward

- Build our tool set
- Step up our activities
- Launch the team's website on our intranet
- Maintain contact and contribute to the TF-CISRT
- Launch team within the Government and website on the net
- Join FIRST



mtCERT Contact

- MITTS Service Call Center Telephone (00356)
2599 2777
- Email mtcert.mitts@gov.mt
- mtCERT Fax (00356) 2599 2823



mtCert

Hvala

Thank You

