

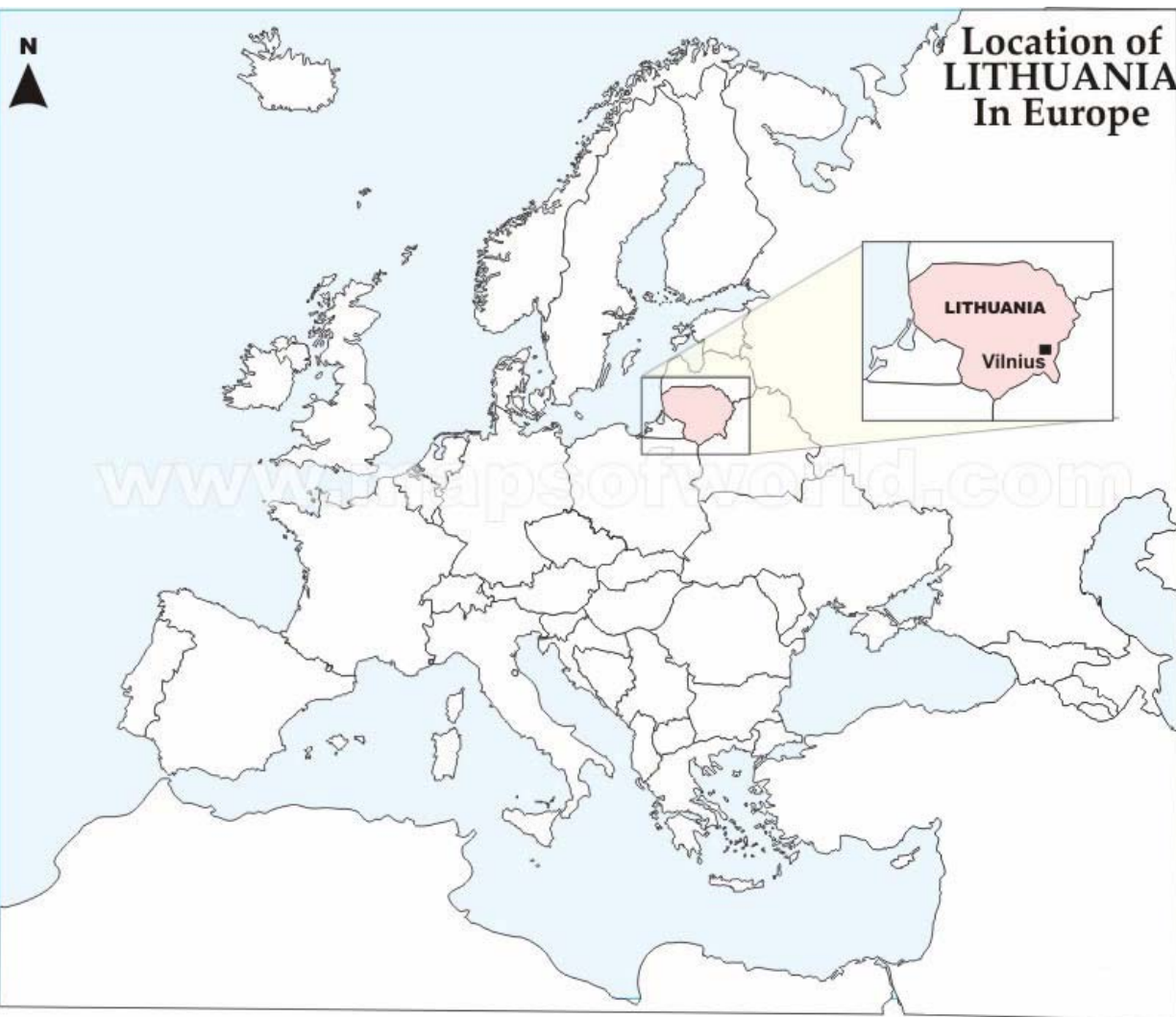


cert-it

26th TF-CSIRT Meeting
19 January 2009
Riga



Introduction



Territory: 65 200 km².
Inhabitants: 3,5 mln.

Market:
1 major fixed line operator.
3 GSM operators.
117 ISPs.
More then 100 hosting comp.
Broadband Internet users'
number reached 0,66 mln.
(19,7% penetration).
Increased by 8 times from
2003.

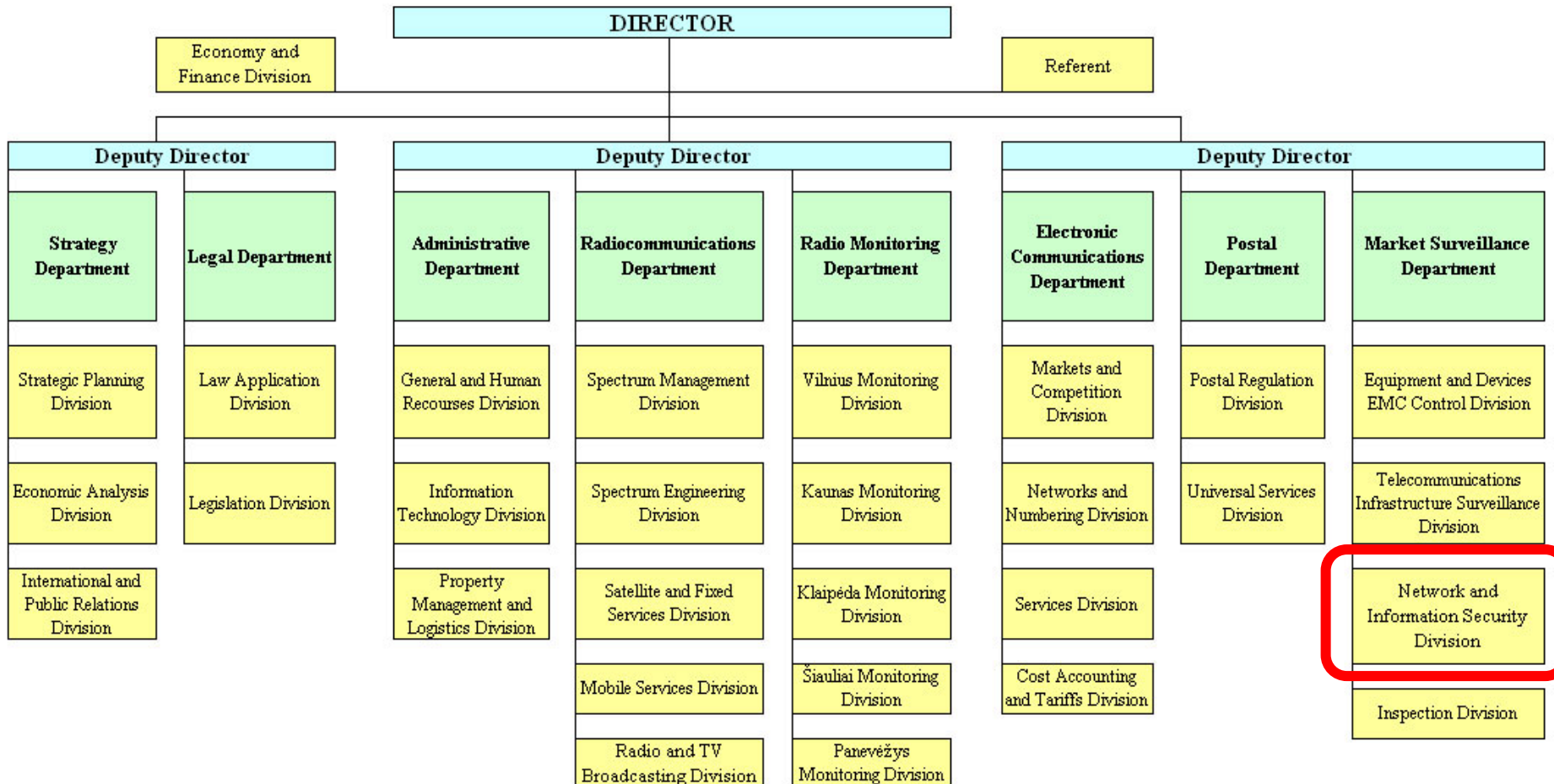
145% mobile penetration.

CERT-LT creation history



- ❑ First call for CERT establishment in Lithuania was made on 24th of March 2005 by the Government decision No 315.
- ❑ At the end of 2005 was decided to form CERT under the Communications Regulatory Authority (NRA) capabilities.
 - ✓ Actions performed to recruit specialists; consultations with other teams (LITNET-CERT, SITIC, CERT-FI) was made; TRANSITS trainings (in cooperation with ENISA) performed; and technical infrastructures built.
- ❑ On the 2nd of October 2006, CERT-RRT officially started incidents management work.
- ❑ On the June of 2008 hundreds of web-sited (including governmental) was defaced in Lithuania. Incident got huge media interest.
- ❑ On the 9th of July 2008 Government institutions and Parliament reacted adopting national incidents management team (CERT-LT) giving this responsibility for NRA's CERT.

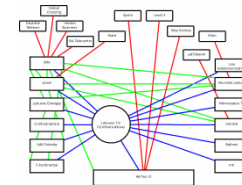
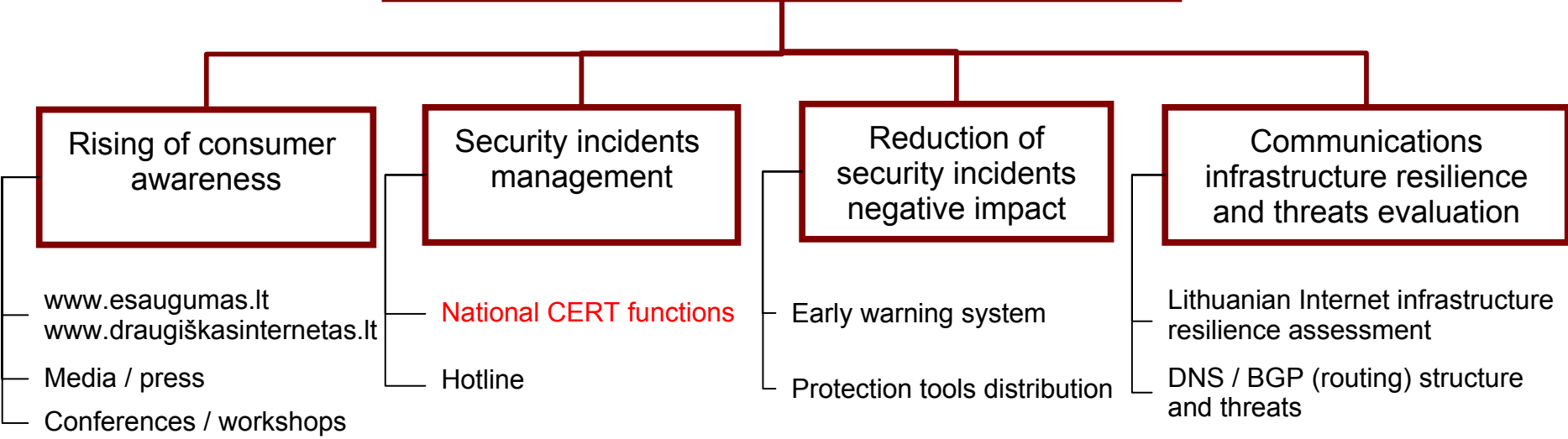
Place in National Regulator Authority (NRA)



Scope of tasks



RRT Networks and information security division

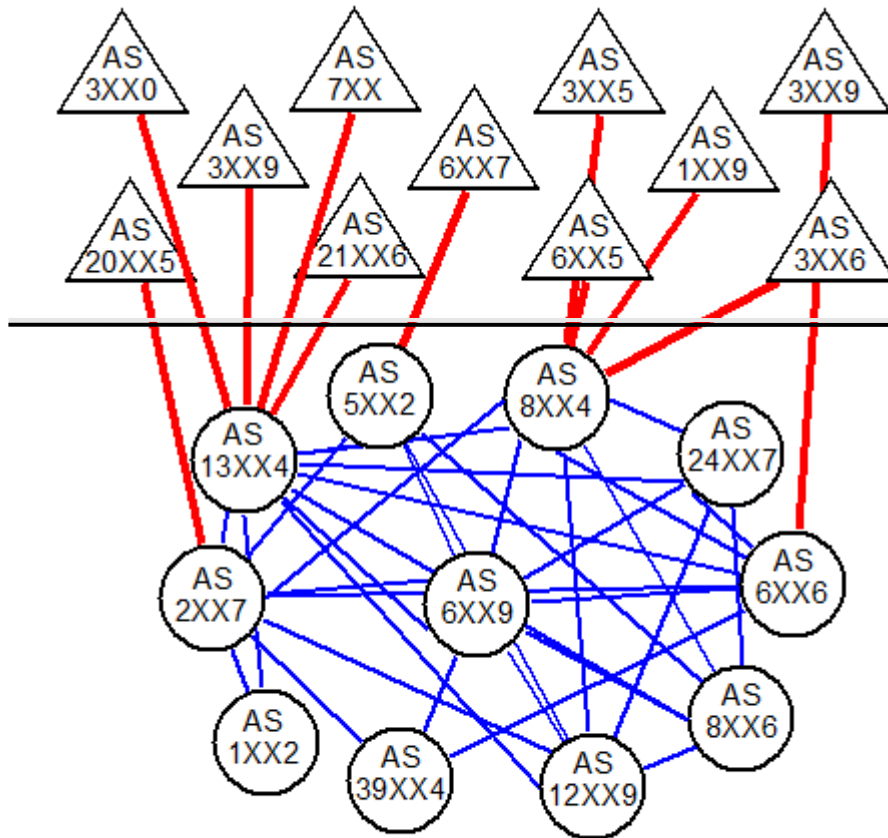


CERT-LT mission and constituency



- ❑ Mission statement:
 - ✓ The purpose of the CERT-LT is to enhance security and to raise users trust by **coordinate** actions reacting to security incidents in Lithuanian public electronic networks and doing their prevention.
- ❑ Duties:
 - ✓ Collection and investigation of incidents in Lithuanian public electronic networks.
 - ✓ Coordination of actions of service providers and CERT groups in Lithuania when responding to incidents.
 - ✓ Investigation of vulnerabilities of networks and information systems and prevention of incidents.
 - ✓ Dissemination of information on threats to network and information security.
 - ✓ Monitoring the state of network and information security in public electronic networks.
- ❑ Constituency:
 - ✓ Telecommunication networks operators, Internet service providers and Internet hosting companies in Lithuania.
 - ✓ Electronic communications end users, especially in case they can't solve their problems with their ISP.

LT internet diagram



Foreign ISPs

11 of 117 Lithuanian ISPs that has big influence for national Internet infrastructure functionality

Statistics

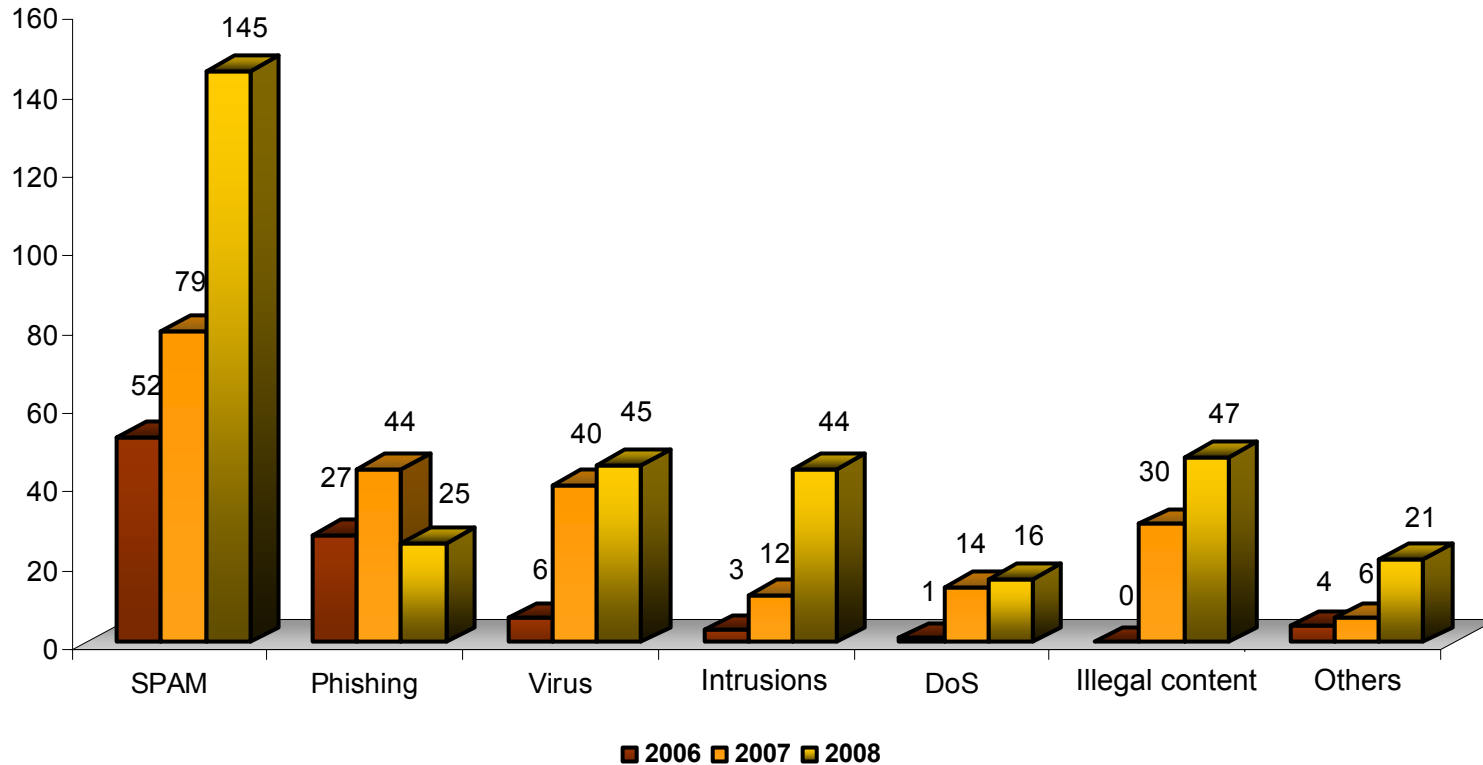


For period 2006 – 2008 we investigated 661 incidents.

93 for 2006

225 for 2007

343 for 2008

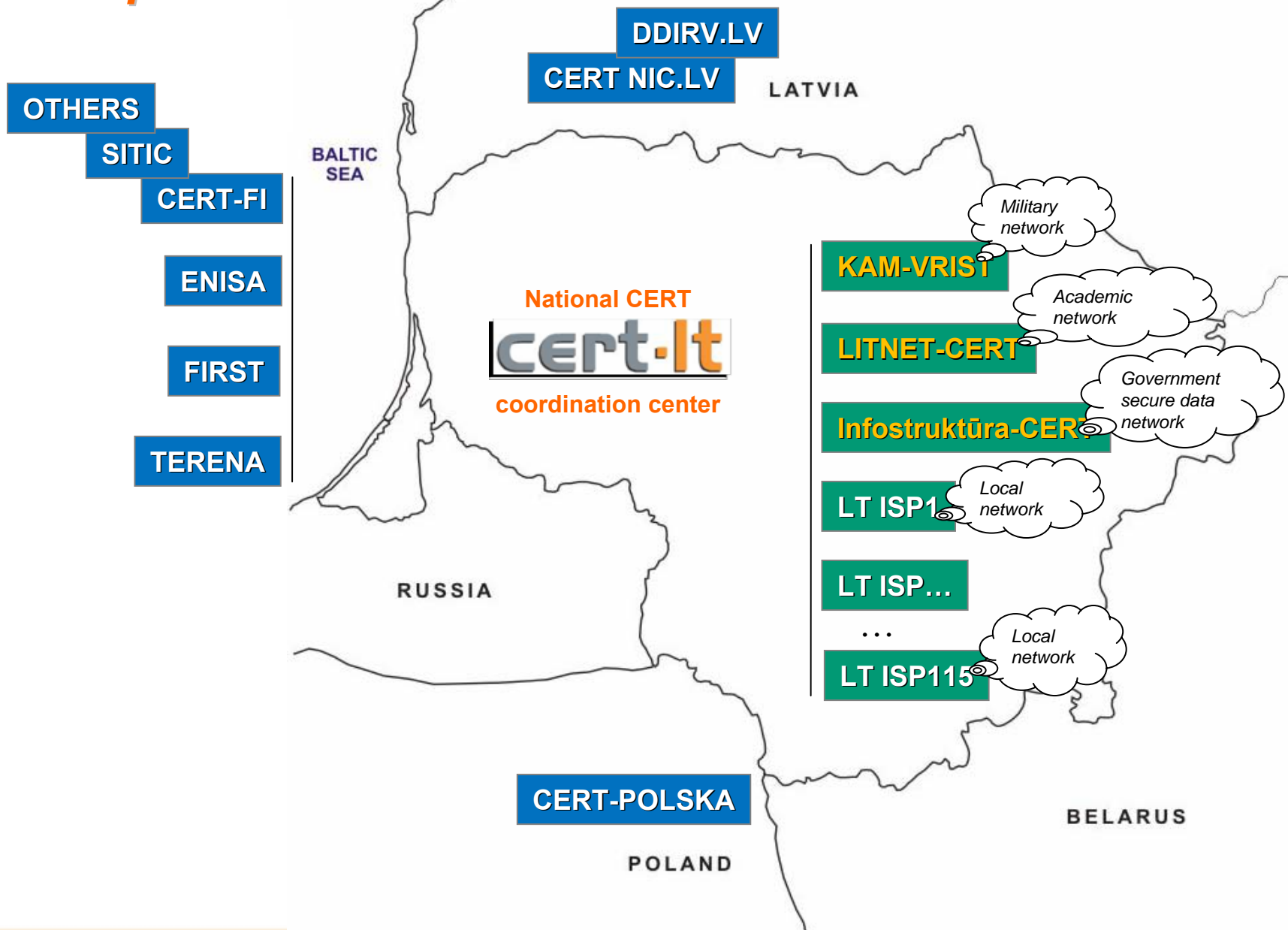


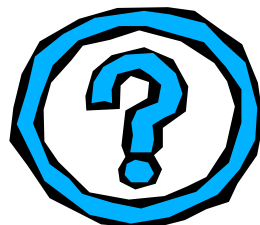
Some more info about CERT-LT



- ❑ Current staff: 2 specialists and team manager.
 - ✓ We expect to have 1 more employ this year.
- ❑ Incidents information sources:
 - ✓ Service providers and end users can report through the web form on www.cert.lt or using e-mail cert@cert.lt.
 - ✓ Information from network sensors systems or honey-nets (at the moment foreign only) related to Lithuanian AS numbers or national IP space.
 - ✓ Other CERT groups from Lithuania or abroad.
- ❑ Information shearing capabilities:
 - ✓ Contacts network of ISPs persons responsible for security in particular network.
 - ✓ Contacts network of governmental institutions responsible for various IT security issues.
 - ✓ End users mailing list and dedicated web-site for alerts on important IT security threats.
 - ✓ Contacts to media.
- ❑ Since 2009 we use new-independent, created to satisfy our own needs, incidents management system.
- ❑ 13-01-2009 new legislation proposal announced for public consultations.

CERT map of LT





Rytis Rainys

The Communication Regulation Authority of the Republic of Lithuania
Head of Network and Information Security Division

E-mail: rrainys@rrt.lt
Tel.: +370 5 210 5676

CERT-LT

Algirdo Str. 27A, LT-03219 Vilnius
Tel.: +370 5 210 56 79, fax.: +370 5 216 15 64
E-mail: cert@cert.lt
PGP/GPG Key ID: 0xA3BACE47
<https://www.cert.lt>