

# Pathology Atlases

## Service Provider in Multi-Federation Environment

Michal Procházka, Josef Feit





# PATHOLOGY IMAGES

Collection of high resolution histological pictures

## [Hypertext atlas of Dermatopathology, version 10.10 October 2008](#)

Hypertext Atlas of Dermatopathology contains thousands of clinical and histological images of skin diseases. Virtual microscope interface is used to access histological images available in very high resolution. The Atlas is available in English and Czech.

## [Hypertext atlas of Fetal and Neonatal Pathology, version 1.31 October 2008](#)

Hypertext Atlas of Fetal and Neonatal Pathology contains clinical and histological images of various form of developmental anomalies. Virtual microscope interface is used to access histological images available in very high resolution. The Atlas is available in English and Czech.

## [Hypertext atlas of Pathology, version 1.20 October 2008](#)

Hypertext Atlas of Organ Pathology contains teaching materials for pre-graduate students. It is under construction and in full version so far available in Czech language only. The English version contains only chapters with images to enable image sharing (see below). The interface is similar to the Atlas of Dermatopathology. Many macroscopic and microscopic images are available, as well as images from CT and MRI scanners and endoscopes.

## [Demo page of the Atlas](#)

This page demonstrates technologies used in the Atlas on selected images (activation of arrows, sharpening, virtual microscope). This page does not require registration.

## [Tool for sharing images of this atlas in your HTML documents](#)

Images from our atlases can be (for teaching purposes) shared in your HTML documents. After giving the image number short code snippet is generated. This code can be included in other HTML documents. The functionality of the atlas (arrows, virtual microscope) is preserved. Users must be registered users of the atlas.

Please select the language:  English  Czech

**Registration is required to use the atlases. If you are not registered, please continue [HERE](#).**

# Atlases - <http://atlases.muni.cz>

Three types of atlases

- Atlas of Dermatopathology

- Atlas of Fetal and Neonatal Pathology

- Atlas of Pathology for Pregraduate students of Medicine

These atlases can serve as sources of teaching material for pregraduate as well as postgraduate students of pathology.

Histological images are available in very high resolution and virtual microscope interface is available to access these images. Images are annotated (arrows can be activated to show important parts of images). Expert systems for epidermal and adnexal skin tumors and non-tumorous lesions are available as well.

Ultrasound videos are available for comparing prenatal and autoptic diagnoses.

The atlases are equipped with a tool for image sharing: simple code generator, enabling teachers to use the images of the atlas in their own teaching materials.

All these materials are available for free. Members of participating federations can access the whole contents of these atlases after the registration.

# Statistics

3296 users, 30 from federations

7775 images, major part is in high resolution

Avg. 550 visits per day

# Requirements

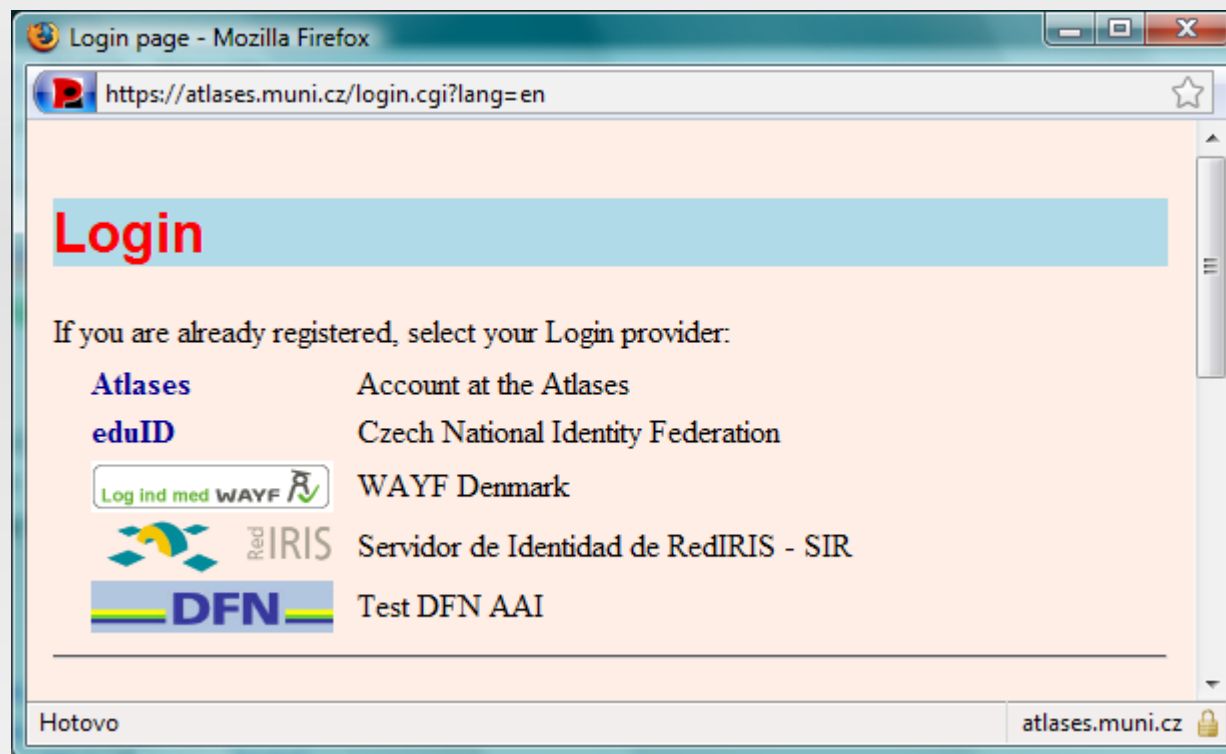
Protected high res images

SSO

Unique identifier (eppn/targeted-id)

Optionally e-mail address

# Actual State



SURFfederatie – in negotiation phase, telephone contact required

# Federations

## Sponsor needed

Switch AAI (CH), HAKA (FI), FEIDE (NO), CRU (F), InCommon (US)

Problem with finding a sponsor, users of the Atlases are not eligible to negotiate the process. It is hard to find responsible contact at the university which should initiate the connection process as a sponsor

## Only agreement needed

SIR (E), WAYF (DK), DFN (D), UK Access Management Federation (UK), SURFfederaie (NL)

In some cases missing clear definition of the whole negotiation process

## Without any information about connection process

SWAMI (SE), AAF (A)

# Lessons learned

Provided contact e-mail addresses are probably not read by anyone

WAYF DK

Tested connection of Shib SP 2 with SimpleSAMLPHP

Problem with nameFormat of the attribute

Incompatibility with forceAuth

Very good cooperation with operators of the federation

SIR

Information is only in Spanish

Also very good cooperation with operators of the federation

DFN

Has an management system for SPs, where they can change data

# Visits

## Map Overlay

Oct 3, 2008 - Nov 2, 2008

% New Visits



**11,405 visits came from 117 countries/territories**

Detail Level: [City](#) | [Country/Territory](#) | [Sub Continent Region](#) | [Continent](#) Dimension: [None](#)

If you could help us to connect the Atlases to your federation, please contact me ...

[michalp@ics.muni.cz](mailto:michalp@ics.muni.cz)