



IDM@UmU



Umeå University

- **Founded 1963**
- **29.000 Students**
- **1.500 Ph Students**
- **4.100 employees**



Goal of the IdM system

- We assume that in the future all our systems will be accessible to all our users

★ We have to know who our users are

- What they can do with the systems are then based on what they are.

★ The information about our users **MUST** be accurate



Requirements

- Must support initial population of ~40,000 users, and support growth.
- Must allow for fluid population, including fluctuating numbers of traditional classifications such as faculty and student, and non-traditional such as guests, affiliates, and federated partners.
- Must support end-to-end propagation of identity changes in real-time, or near real-time, to ensure consistent and correct access at all times.
- Must support long-term retention of identity history.
- Should support zero-downtime configurations to support dependent services.



History of our IdM

2002 Q3 Started working on the first version

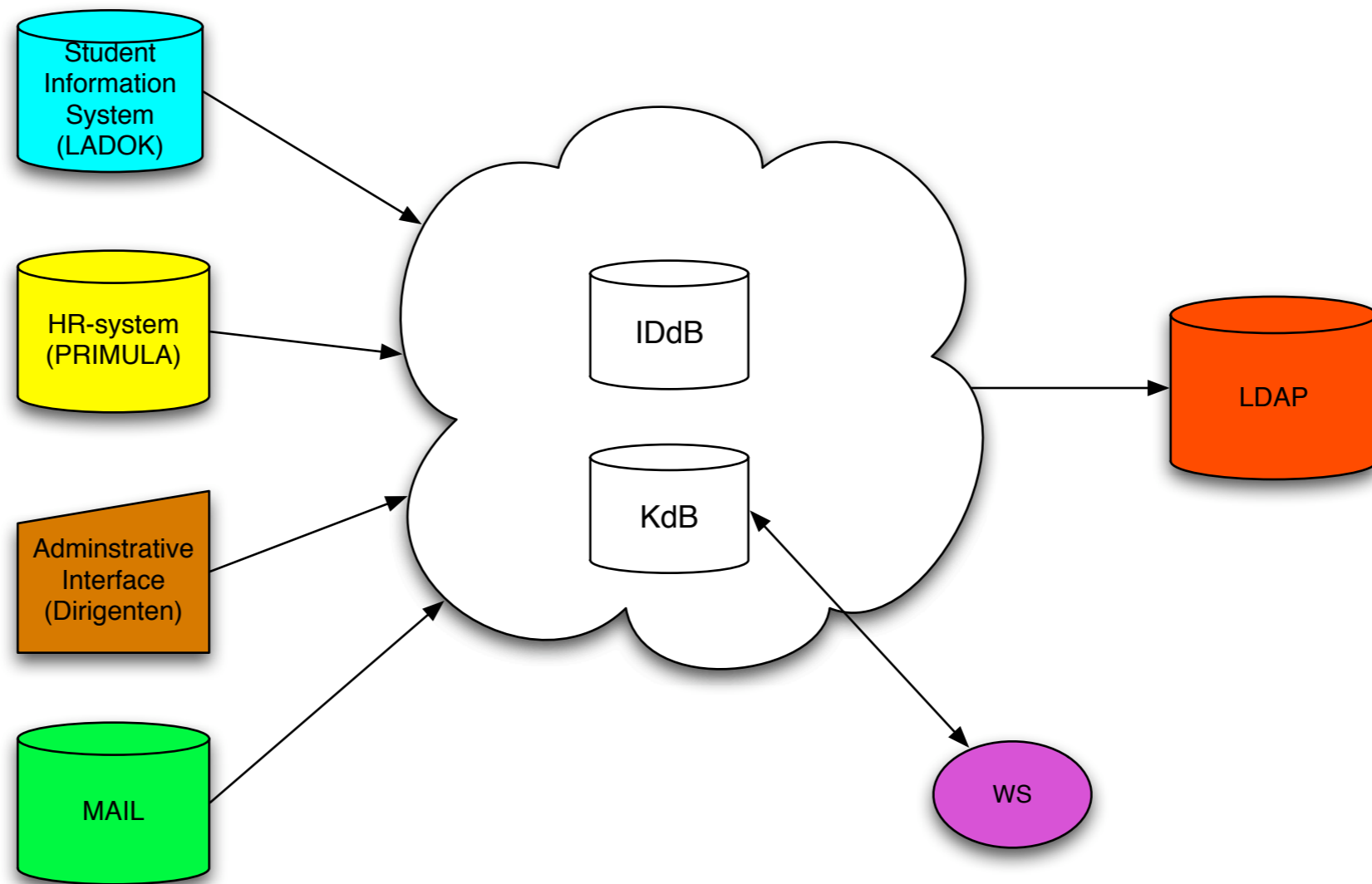
2004 Q1 Put into production

2006 Started working on version 2 together with two other Swedish universities.

We will start the transition from OM to OM2 Q4 2008



Present implementation





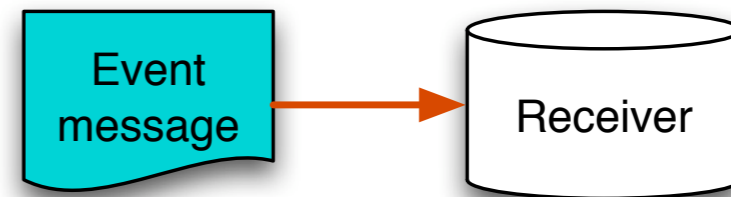
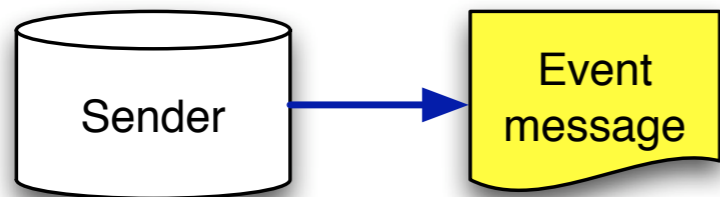
Next version

- **Based on the OpenMetadir project**

<http://www.openmetadir.org/>

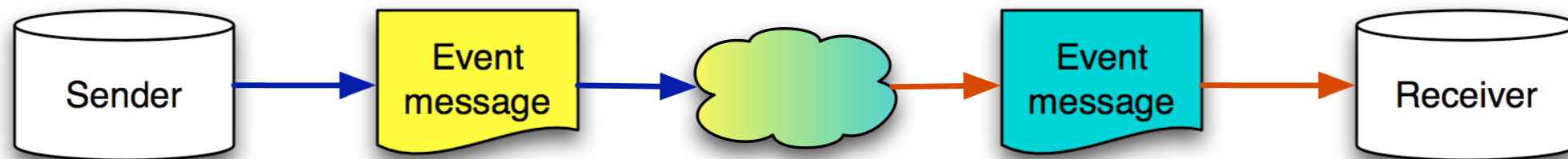


What it's all about





Impedans matchning



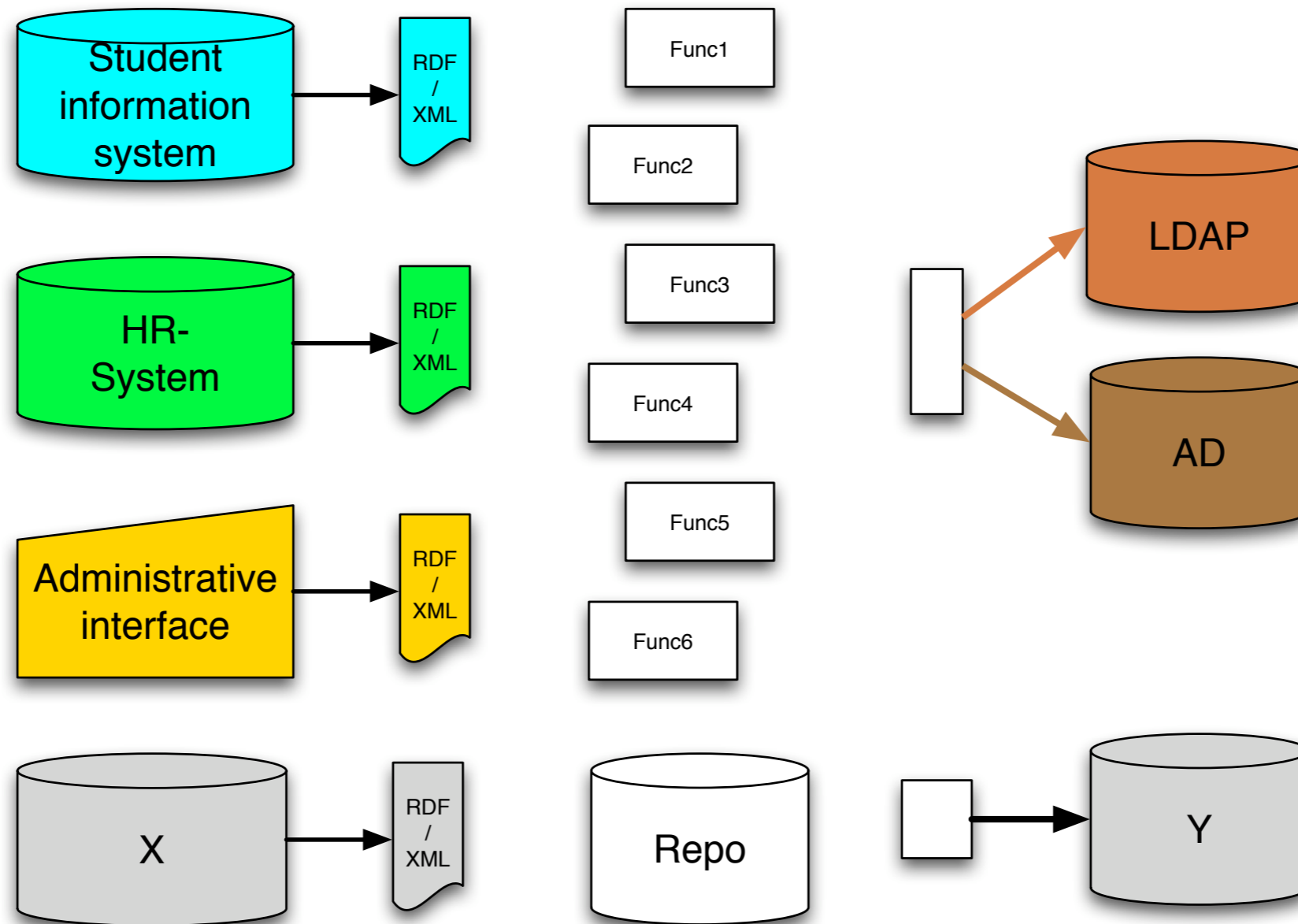


In the same boat



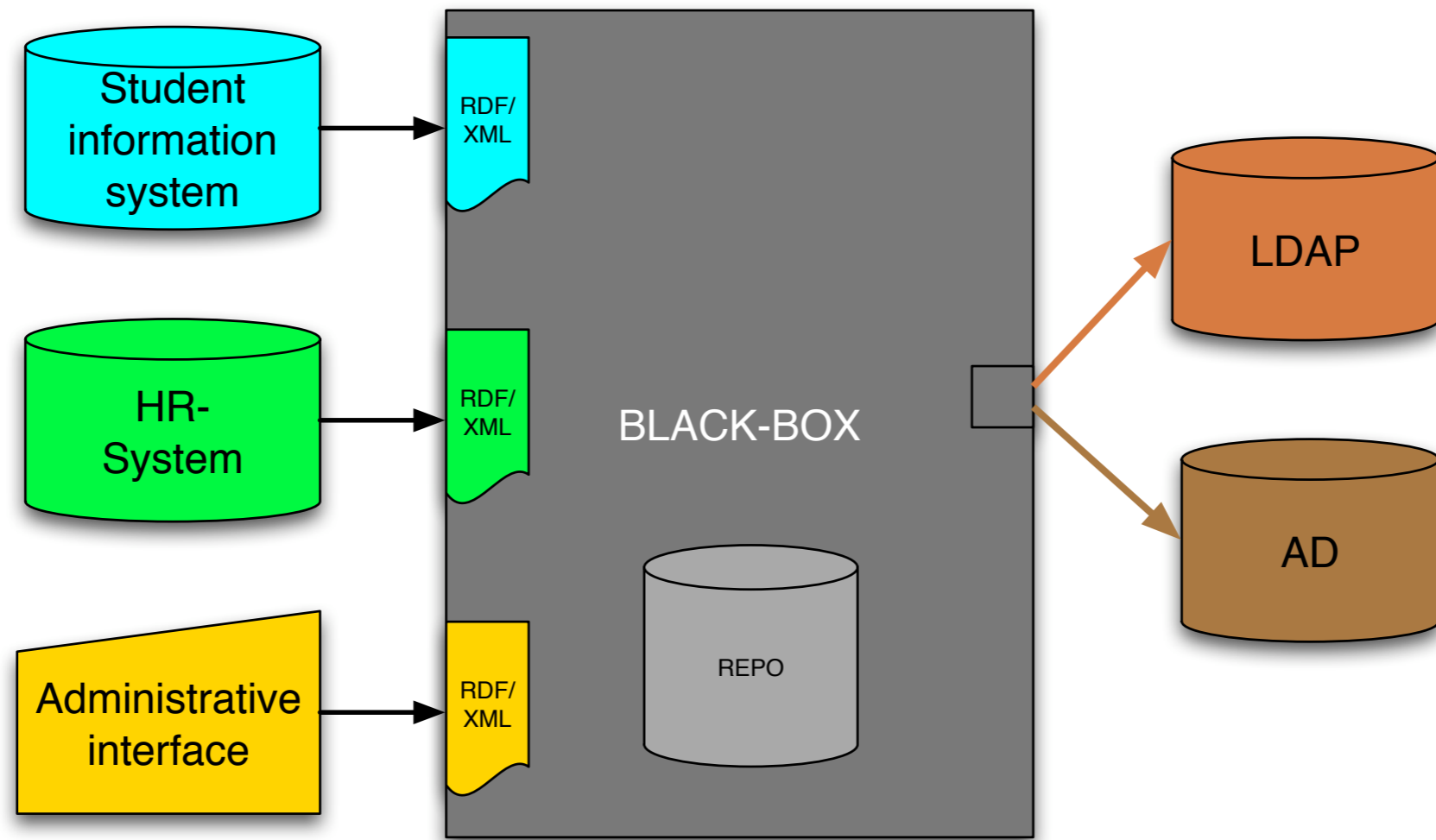


Pick and chose





Whole hog





Basic architecture

- Message syntax - RDF/XML
- Message description language - OWL
- Model based architecture
- Transport agnostic
- DNS/NAPTR/HTTP for dynamic resolving